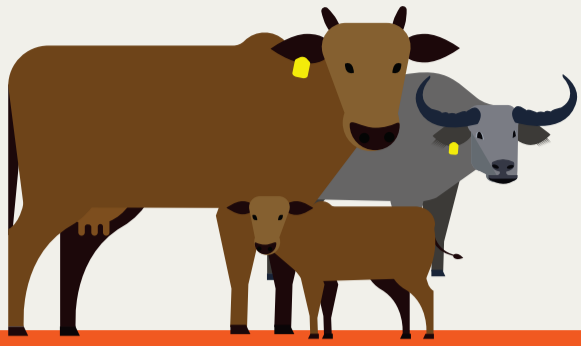


FOOT AND MOUTH DISEASE



Know the signs

In Cattle

Cattle with foot and mouth disease may develop blisters (vesicles) that progress to erosive sores:

- on the feet - between the toes and at the junction of the hoof horn and the skin.
- in the mouth.
- on the tongue.
- on the teats/udder.

Other signs of foot and mouth disease in cattle include:

- lameness.
- fever.
- depression.
- reluctance to feed.
- drooling.
- producing less milk.
- sudden death in calves.

If you suspect foot and mouth disease in your animals, please report it immediately by contacting:

Garden Route Emergency Call Centre

044 805 5071 / 081 709 5193

Dr Leana Janse van Rensburg (State Vet, George)

044 803 3770 / 083 797 0010

leana.jansevanrensburg@westerncape.gov.za

svgeorge@westerncape.gov.za

Dr Cathy Fox (State Vet, Oudtshoorn)

044 203 9443/5 / 082 699 6043

cathy.fox@westerncape.gov.za

doa.svoudtshoorn@westerncape.gov.za



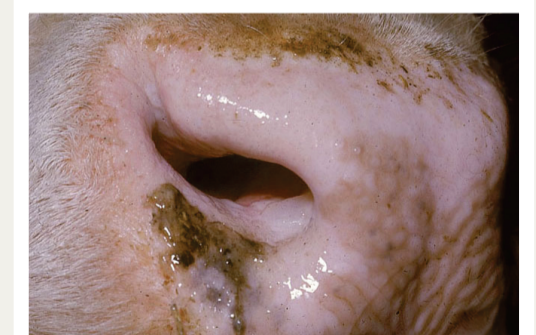
Mouth sore where a blister has burst.



Blisters on tongue with yellow-tan edges.



Lesion in the hoof of a cow



Close-up of a cow's nose showing a small fluid-filled blister inside the nostril.