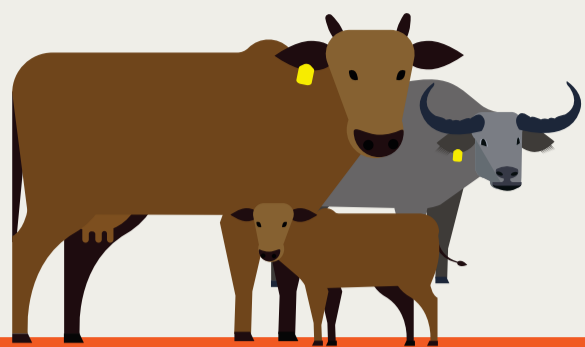


# ISIFO SOMLOMO NEMPUPHU



## Yazi limpawu

### Kii-Nkomo

linkomo ezinesifo seempupu nomlomo zinokuba namadyungudyungu (iivesicles) aqhubekela kwizilonda ezigugulekayo:

- ezinyaweni - phakathi kweenzwane nakwindawo apho uphondo lwempuphu ludibana khona nolusu
- emlonyeni.
- elulwimini.
- emabeleni.

Ezinye iimpawu zesifo seempuphu nomlomo kwiinkomo ziquka:

- ukuqhwalala.
- umkhuhlane.
- ukudakumba.
- ukungafuni ukutya.
- ukuvuza amathe.
- ukuvelisa ubisi oluncinci.
- ukufa ngequbuliso kumathole.

Ukuba urhanela ukuba imfuyo yakho inesifo seempuphu nomlomo, nceda usixele ngoko nangoko ngokuqhagamshelana:

Igumbi loqhakamshelwano lwecandelo leeNtlekela lwase Garden Route

044 805 5071 / 081 709 5193

Dr Leana Janse van Rensburg (State Vet, George)

044 803 3770 / 083 797 0010

[leana.jansevanrensburg@westerncape.gov.za](mailto:leana.jansevanrensburg@westerncape.gov.za)

[svgeorge@westerncape.gov.za](mailto:svgeorge@westerncape.gov.za)

Dr Cathy Fox (State Vet, Oudtshoorn)

044 203 9443/5 / 082 699 6043

[cathy.fox@westerncape.gov.za](mailto:cathy.fox@westerncape.gov.za)

[doa.svoudtshoorn@westerncape.gov.za](mailto:doa.svoudtshoorn@westerncape.gov.za)



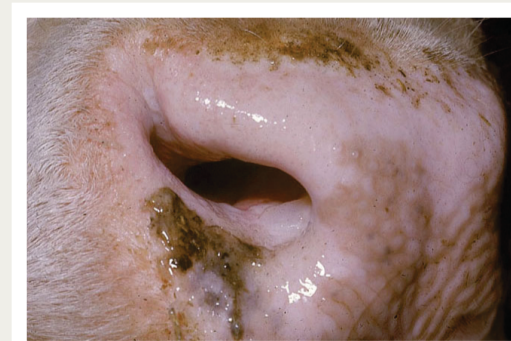
Isilonda somlomo apho kugqabuke ithumba.



Amaqhakva elwimini anempawu ezimthubi ngebala.



Isilonda kwimpuphu yenkomo.



Ukuvaleka kwmpulo yenkomo lithumba eligcwe amanzi ngaphakathi ethatheni .