



**Western Cape  
Government**  
**FOR YOU**

---

Department of Health

# **GRDM IDP Representative Forum Meeting**

**Health is Everybody's Business – Our Vision of the Future**

4 May 2023

# Presentation overview

---

1. Geographic Service Area Overview
2. Garden Route District Health Services
3. Garden Route District Health Services Priorities and Health Interventions
4. NHI aspects and Capital Projects

# 1. Geographic Services Area Overview



# GSA (Geographic Service Area) Concept

---

1. There are 4 components of the health department in the district:
  - DHS, George Regional Hospital, EMS/HealthNet & Forensic Pathology Services
2. The GSA is a functional arrangement to ensure the best possible services to the population of both the Central Karoo and Garden Route even though not all services report to the district office.
3. Active collaboration between the 4 components to plan and implement services

# Service Platform

## Components of the service platform



# Sub-district population

Sub-district	Total population <sup>(A)</sup>	Geographic area (per km <sup>2</sup> ) <sup>(B)</sup>	Population density (the number of people per km <sup>2</sup> in a specific area) <sup>(C)</sup>
Bitou	69 390	992	70
George	212 521	5 191	41
Hessequa	54 018	5 733	9
Kannaland	22 262	4 765	5
Knysna	77 875	1 109	70
Mossel Bay	96 360	2 001	48
Oudtshoorn	93 992	3 540	27
District total	626 418	23 331	27

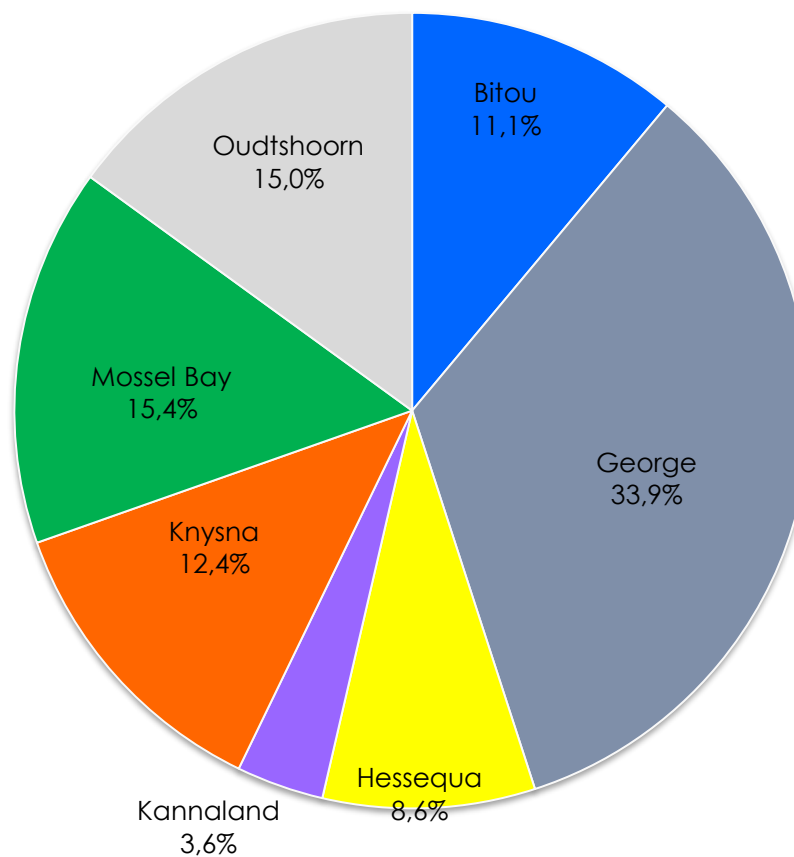
[Source A: Circular H13/2023: Population data]

[Source B: [https://municipalities.co.za/overview/145/Garden Route-district-municipality](https://municipalities.co.za/overview/145/Garden%20Route-district-municipality)]

[Source C]: [http://www.statssa.gov.za/standardisation/Concepts and Definitions %20StatsSAV3.pdf](http://www.statssa.gov.za/standardisation/Concepts%20and%20Definitions_%20StatsSAV3.pdf)

## Sub-district population cont...

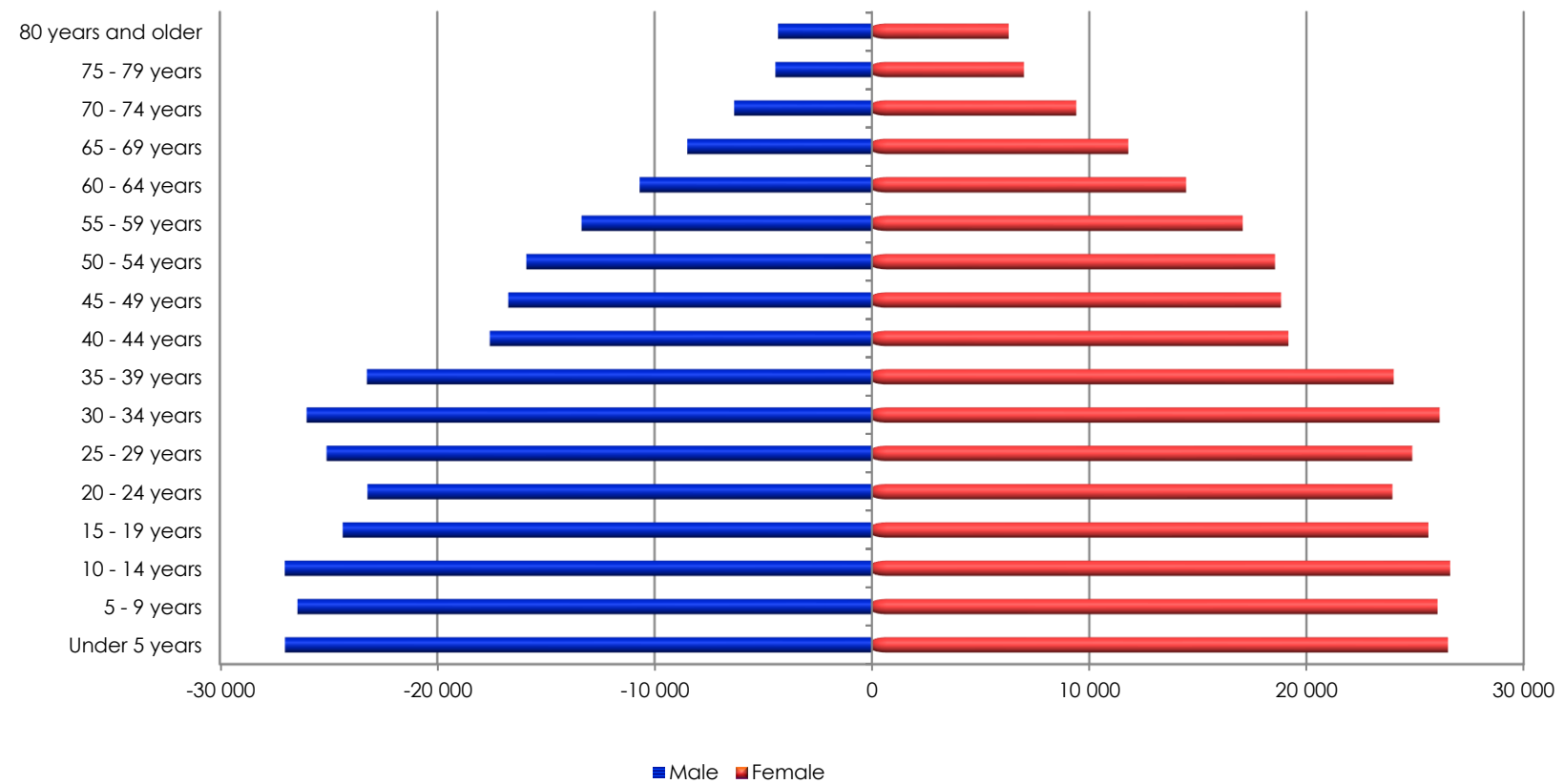
---



[Source: Circular H13/2023: Population data]



# Population Pyramid



[Source: Source: Circular H13/2023: Population data]

# Burden of Diseases

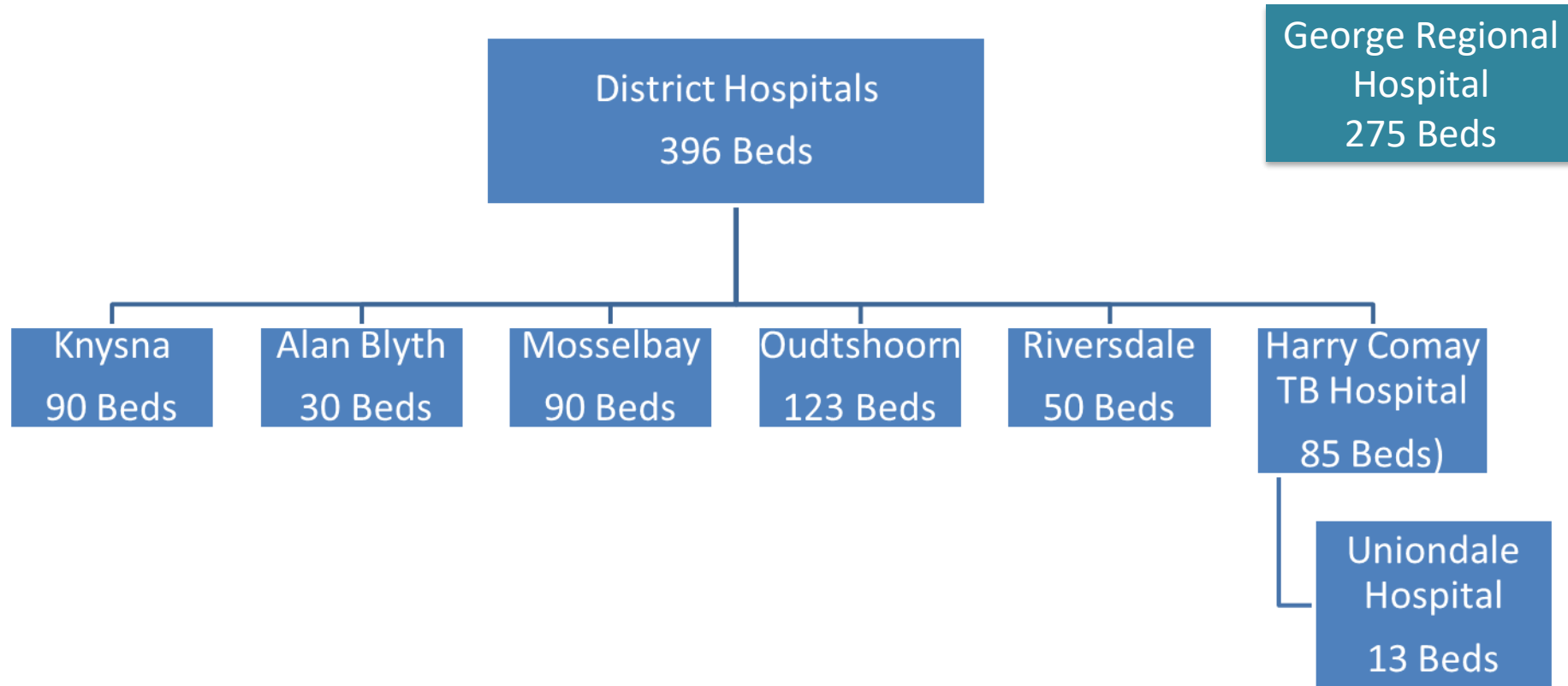
Rank	Cape Winelands	Central Karoo	Cape Town	Garden Route	Overberg	West Coast	Western Cape
1	Diabetes mellitus (7.9%)	Chronic lower respiratory diseases (9.5%)	Diabetes mellitus (7.7%)	Cerebrovascular diseases (7.6%)	Cerebrovascular diseases (7.4%)	Chronic lower respiratory diseases (8.2%)	Diabetes mellitus (7.6%)
2	Cerebrovascular diseases (6.9%)	Tuberculosis (8.8%)	Ischaemic heart diseases (6.3%)	Diabetes mellitus (7.3%)	Ischaemic heart diseases (7.2%)	Diabetes mellitus (7.8%)	Ischaemic heart diseases (6.1%)
3	HIV disease (6.6%)	Cerebrovascular diseases (6.9%)	HIV disease (5.5%)	Tuberculosis (6.7%)	Diabetes mellitus (7.0%)	Tuberculosis (7.2%)	Cerebrovascular diseases (5.9%)
4	Chronic lower respiratory diseases (6.5%)	Hypertensive diseases (5.5%)	Cerebrovascular diseases (5.2%)	HIV disease (6.2%)	Malignant neoplasms of resp & intrathoracic organs (6.3%)	Ischaemic heart diseases (6.7%)	HIV disease (5.7%)
5	Tuberculosis (5.6%)	Diabetes mellitus (5.5%)	Malignant neoplasms of digestive organs (4.5%)	Chronic lower respiratory diseases (5.9%)	Chronic lower respiratory diseases (6.1%)	Cerebrovascular diseases (6.7%)	Chronic lower respiratory diseases (5.1%)
6	Ischaemic heart diseases (4.9%)	Ischaemic heart diseases (4.7%)	Malignant neoplasms of resp & intrathoracic organs (4.3%)	Ischaemic heart diseases (5.7%)	HIV disease (5.4%)	HIV disease (5.6%)	Tuberculosis (4.9%)

[Source: Mortality and causes of death in South Africa, 2018: Findings from death notification, Statistical Release P0309.3]

7	Malignant neoplasms of resp & intrathoracic organs (4.7%)	Other forms of heart disease (4.6%)	Tuberculosis (4.2%)	Malignant neoplasms of resp & intrathoracic organs (4.4%)	Malignant neoplasms of digestive organs (5.2%)	Malignant neoplasms of digestive organs (4.6%)	Malignant neoplasms of digestive organs (4.5%)
8	Malignant neoplasms of digestive organs (4.4%)	Malignant neoplasms of resp & intrathoracic organs (4.4%)	Chronic lower respiratory diseases (4.1%)	Malignant neoplasms of digestive organs (4.2%)	Hypertensive diseases (3.7%)	Hypertensive diseases (4.5%)	Malignant neoplasms of resp & intrathoracic organs (4.5%)
9	Hypertensive diseases (3.5%)	HIV disease (3.6%)	Hypertensive diseases (3.8%)	Hypertensive diseases (3.8%)	Tuberculosis (3.6%)	Malignant neoplasms of resp & intrathoracic organs (4.2%)	Hypertensive diseases (3.8%)
10	Other forms of heart disease (2.8%)	Malignant neoplasms of digestive organs (3.3%)	Other forms of heart disease (3.3%)	Other forms of heart disease (3.6%)	Other forms of heart disease (3.3%)	Other forms of heart disease (3.2%)	Other forms of heart disease (3.3%)
	Other natural causes (35.3%)	Other natural causes (33.7%)	Other natural causes (36.3%)	Other natural causes (35.1%)	Other natural causes (34.0%)	Other natural causes (32.5%)	Other natural causes (35.6%)
	Non-natural causes (10.9%)	Non-natural causes (9.4%)	Non-natural causes (14.8%)	Non-natural causes (9.5%)	Non-natural causes (10.8%)	Non-natural causes (8.8%)	Non-natural causes (13.0%)

## 2. Garden Route District Health Services

# Hospital Services - Bed Allocation



# Primary Health Care Facilities

Sub-district	Community Day Centre (CDC)	Clinic	Satellite Clinic	Mobile	Total facilities
Hessequa	0	3	3	3	9
Mossel Bay	2	3	7	4	16
George	2	10	1	3	16
Knysna	1	4	2	3	10
Bitou	1	4	1	2	8
Kannaland	0	4	1	4	9
Oudtshoorn	1	5	0	3	9
<b>Garden Route</b>	<b>7</b>	<b>33</b>	<b>15</b>	<b>22</b>	<b>77</b>

### **3. Garden Route District Health Services Priorities and Program Interventions**

# Priorities for Primary Health Care

---

1. Expand principle of 'Community Orientated Primary Care' (COPC) throughout district
2. Strengthening of multi-sectoral partnerships
3. Focus on improving patient experience of care  
(Implementation of Compliments and Complaints app)
4. Improvement in 'Ideal Clinic' outcomes (Office of Health Standards Compliance)



# Priorities for Hospitals

---

1. Improvement in 'Ideal Hospital' outcomes (Office of Health Standards Compliance)
2. Consolidation of outreach support of specialists from George Hospital to sub-districts
3. Ensure Emergency Centres are fully capacitated and functional
4. Support EMS and HealthNet transport initiatives
5. Implementation of 'Principles for Safe Obstetric Services' to reduce maternal mortality

# Health Programs Interventions – Focus 2023/24

---

1. First 1000 days of life  
(Family Planning, Ante-natal services, Obstetric services, Immunization & Nutrition)
2. TB Program
  - Improving data input to inform quality improvement plan
  - Strengthening of linkage to care
3. HIV Program
  - Increase access to HIV testing
  - ART long-term retention of care, with focus on 10-14 yr old youth
4. Strengthening of Mental Health Program

## 4. NHI Aspects and Capital Projects

# NHI aspects and Capital Projects

**NHI Projects are estimated to commence in May 2023:**

Description	Facilities	Estimated Budget	Estimated Practical Completion Date
Refurbishments and Upgrades	Blanco & Rosemoor Clinics	R 10 028 187.31	July 2024
	Pacaltsdorp & Parkdene Clinics	R 21 610 003.64	July 2024
	Oudtshoorn Clinic & Hospital	R 50 743 556.14	July 2024
	Albertina & Riversdale Clinics and Hospital	R 20 846 496.67	July 2024

These projects are all in the final planning and implementation phase. Awaiting further communication from NDoH regarding the contractor site handover. Various stakeholder facilitation and engagements with the local clinic committee and hospital boards took place in April 2023.

# NHI aspects and Capital Projects cont..

## Capital Projects:

Description	Facilities	Estimated Budget
Refurbish and related work	Ladismith Hospital (Alan Blyth)	R19 649 494
Clinic Replacement	Ladismith Clinic	R24 619 066
Refurbish and related work	Calitzdorp Clinic	R4 510 377
Upgrade and additions	Amalienstein and Zoar Clinics	R1 671 000
Clinic Replacement. Will be relocated to Marsh Road	George Road Clinic	R11 000 000
Upgrade and additions to Entrance and Records	Mossel Bay Hospital	R64 319 000
Clinic Replacement	New Hornlee Clinic	TBD and in planning phase

The above are still in the design and planning phase and awaiting further communication from the Provincial Facilities and Infrastructure Management.

- New Forensic Pathology Unit at Knysna Hospital is well under way. Expected completion date end of July 2023

If you want to go fast, **go alone**  
If you want to go far, **go together**

---

Thank you