

28 September 2022

Our Ref: 1001661/22.31/ACK/kk

TO ALL TENDERERS

Dear Sir / Madam

TENDER NO. GRDM/24/21-22 : THE CONSTRUCTION OF A NEW REGIONAL WASTE MANAGEMENT FACILITY AND ASSOCIATED INFRASTRUCTURE

ADDENDUM TO TENDER DOCUMENT NO. 2

This "Addendum to Tender Documents" is an addition to the Tender Documents listed in the Schedule of Documents. Any tender submitted will be deemed to be in accordance with these Documents amended in accordance with the following instructions:

ATD 2-1 Part T1: Tendering Procedures

ATD 2-1.1 Tender Notice and Invitation to Tender

ATD 2-1.1.1 The tender closing date has been extended as per below.

Fully completed tender documents must be placed in a sealed envelope and placed in the **tender box at the Garden Route District Municipality Head Office, on the Ground Floor, at Reception, 54 York Street, George by not later than 12h00 on 25 October 2022** or be mailed to reach the **Tender Box, Garden Route District Municipality, PO Box 12, George, 6530** before the specified closing date and time. The envelopes must be endorsed clearly with the number, title, and closing date of the tender as above.

ATD 2-2 Part C2.2 Bill of Quantities

ATD 2-2.1 Amend the following Items to read:

SECTION I : BULK EARTHWORKS

Item No.	Payment Clause	Short Description	Unit	Quantity	Rate	Amount R c
12.7	PSCG	Supply and place Geogrid including anchorage, all jointing, trimming, and wastage	m ²	2 600		

Item No.	Payment Clause	Short Description	Unit	Quantity	Rate	Amount R c
16.10	PSCG	Supply and place Geogrid including anchorage, all jointing, trimming, and wastage	m ²	1 200		

ATD2-3 Part C3 : Tender Drawings

ATD2-3.1 Additional Tender Drawings

ATD2-3.1.1 1001661-0000-DRG-CC-0200-T0 : Sewer and Water Layout

ATD2-3.1.2 1001661-0000-DRG-CC-0202-T0 : Sewer Details : Inspection Chamber

ATD 2-4 General

ATD 2-4.1 **Estimated** quantities for completion of Phase 1, as part of the **Total Project** is as follows:

Section D : Roadworks

ATD 2-4.1.1 Items D1, D2, D3, D4, D5, D6 – 85 % complete

ATD 2-4.1.2 Item D8 and D9 – Successful Tenderer will be allowed to construct the bituminous surface treatment and cement pavement in half road widths. The purpose of the completion of Phase 1 is to provide the Employer access to General Waste landfill Cell 1A.

ATD 2-4.2 Section I : Landfill

General Waste Landfill Cell

ATD 2-4.2.1 Item I 1.2 – 195 000 m³

ATD 2-4.2.2 Item I 2.2, I 2.3, I 2.4 and Item 2.6 – 57 000 m²

ATD 2-4.2.3 Item 2.5 – 13 000 m³

ATD 2-4.2.4 Item I 3.2 – 1 750 m

ATD 2-4.2.5 Item I 3.4 – 1 600 m

ATD 2-4.3 Refer to Part C3 : Scope of Work, Item C3.1.2 Phasing of Construction for remainder of work required for completion of Phase 1.

NB!! Please confirm receipt of this addendum on the attached Acknowledgement Form and return a signed copy thereof to us. If the Acknowledgement Form is not signed and returned to us your tender may be declared non-responsive.

Yours faithfully



AC KEYSER Pr Tech Eng
Office Manager
pp Zutari

Encl. Annexure A - Acknowledgement Form

Drawings - 1001661-0000-DRG-CC-0200-T0 : Sewer and Water Layout

1001661-0000-DRG-CC-0202-T0 : Sewer Details : Inspection Chamber

Annexure A

ACKNOWLEDGEMENT FORM

1001661

TO : Zutari (Pty) Ltd

Fax No : (044) 873 5843

E-mail : george@zutari.com

Attention : André Keyser

TENDER NO. GRDM/24/21-22

**THE CONSTRUCTION OF A NEW REGIONAL WASTE MANAGEMENT FACILITY AND
ASSOCIATED INFRASTRUCTURE**

ADDENDUM TO TENDER DOCUMENTS NO. 2

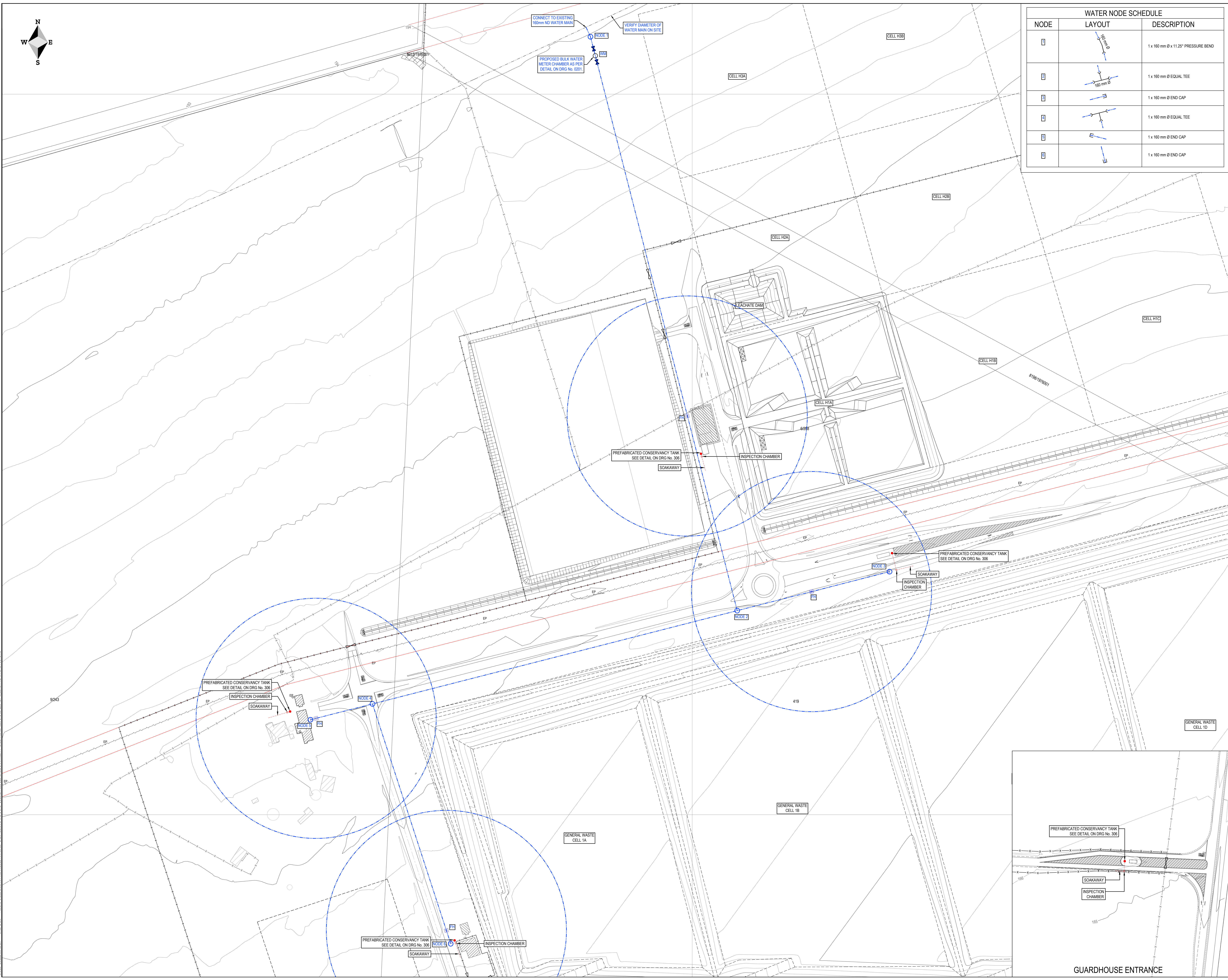
**We acknowledge receipt of the above Addendum and confirm that any
tender we submit will take account of the instructions detailed therein.**

Date

Signed :

on behalf of

(PLEASE PRINT)










DISCLAIMER

IF CONSTRUCTION DRAWINGS ARE ISSUED UNSIGNED, THE MASTER WITH THE ORIGINAL SIGNATURE OF APPROVAL, WILL BE HELD AT THE ZUTARI OFFICE OF THE APPROVER


GENERAL NOTES:

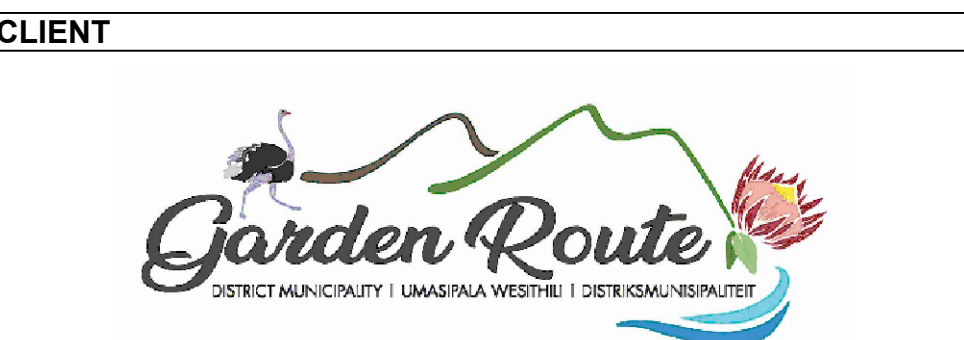

- ALL CONSTRUCTION DRAWINGS TO BE DONE IN ACCORDANCE WITH SANS 1200.
- WATER DETAILS SEE DRG NO. 0201.

LEGEND:

PROPOSED SERVICES:	
	WATER PIPELINE
	WATER HOUSE CONNECTION
	FIRE HYDRANT
	VALVE
	PREFABRICATED CONSERVANCY TANK
	SEWER PIPE
	INSPECTION CHAMBER

EXISTING SERVICES:

	WATER PIPELINE
---	----------------



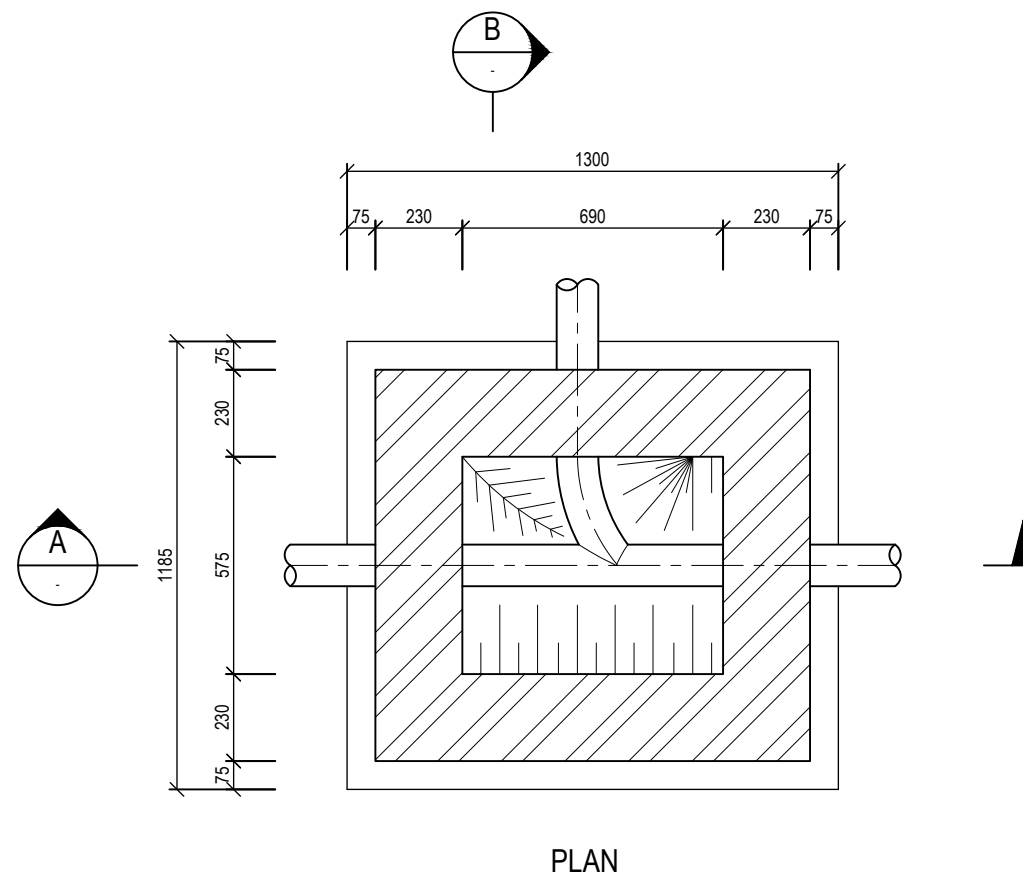
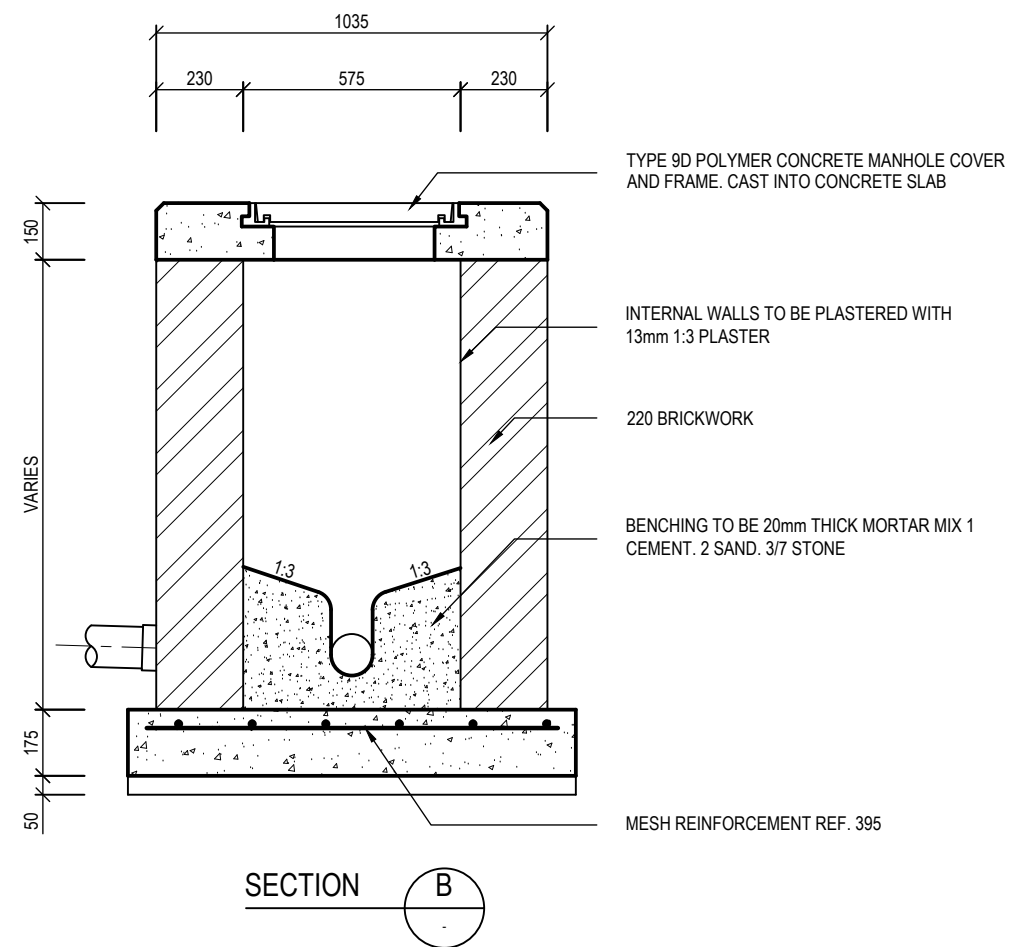
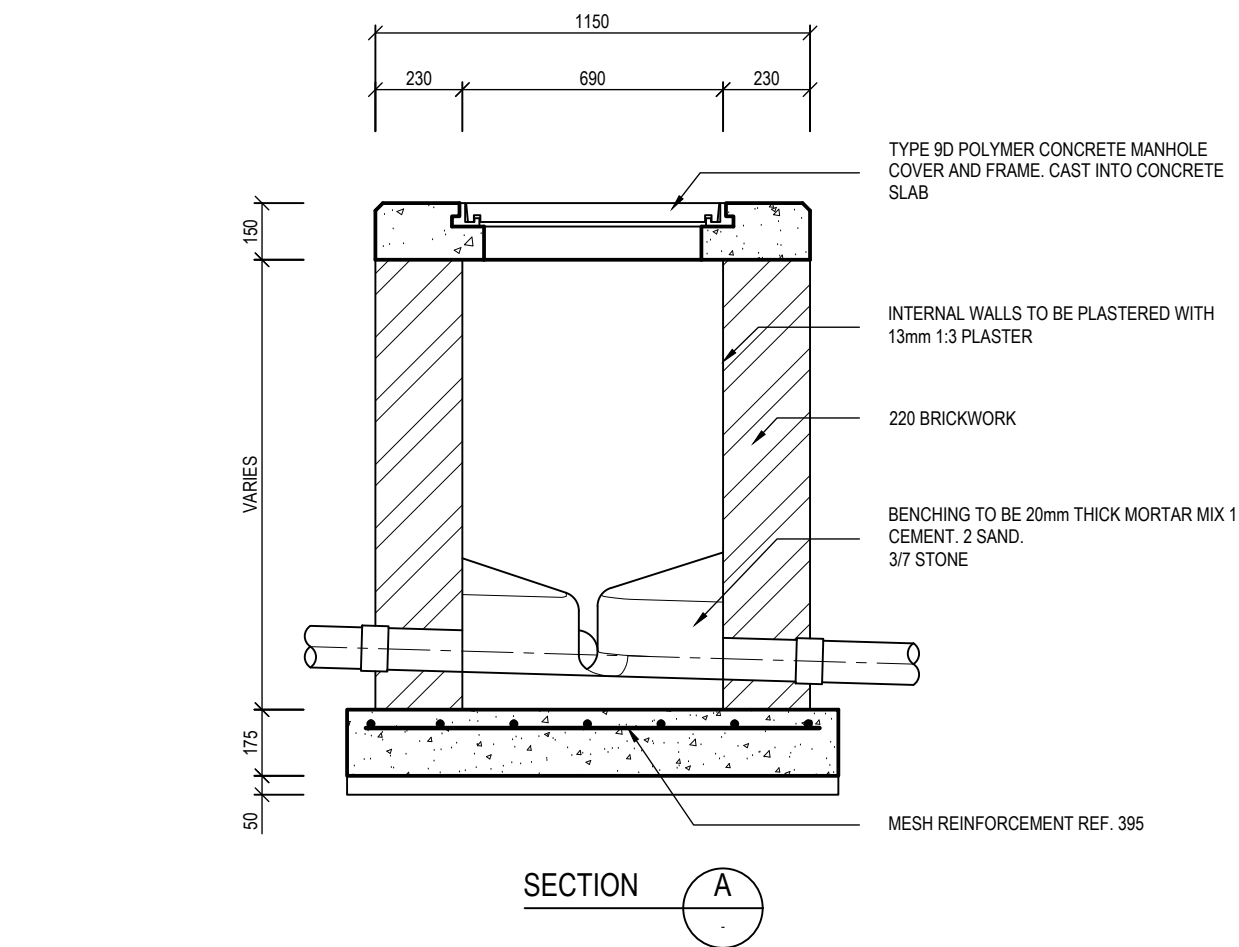
PREFABRICATED CONSERVANCY TANK
SEE DETAIL ON DRG NO. 306

SOAKAWAY

INSPECTION CHAMBER

GUARDHOUSE ENTRANCE

Plot Date: 27/9/2022 2:36:02 pm Office: ZAGRJ Filename: C:\USERS\RUDIBEESLAAR\ZUTARI1001661-GRDM REGIONAL WASTE SITE - DOCUMENTS\05 DELIVER\06 DRAWINGS\1.1. TENDER\1001661-0000-DRG-CC-0202-REV TO SEWER - INSPECTION CHAMBER.DWG



NOTES:

- ONLY DOLOMITIC AGGREGATE AND SULFATE RESISTING CEMENT TO BE USED.
- MANHOLE DEPTHS ARE MEASURED FROM FINAL GROUND LEVEL TO PIPE INVERT AT THE CENTRE OF THE MANHOLE.
- MANHOLE COVER AND FRAME:

"MAVERICK" OR APPROVED EQUIVALENT POLYMER CONCRETE MANHOLE COVER AND FRAME CAST INTO COVER SLAB. COVER AND FRAME TO BE SANS CERTIFIED.

SEWER INSPECTION CHAMBER

SCALE 1:20

DISCLAIMER

IF CONSTRUCTION DRAWINGS ARE ISSUED UNSIGNED, THE MASTER WITH THE ORIGINAL SIGNATURE OF APPROVAL WILL BE HELD AT THE ZUTARI OFFICE OF THE APPROVER

GENERAL NOTES:

- ALL CONSTRUCTION TO BE DONE IN ACCORDANCE WITH SANS 1200.

RESPONSIBLE PERSONS (INTERNAL USE)

	NAME	SIGNATURE	DATE
DRAWN	R BEESLAAR		
DESIGNED	R BEESLAAR		
REVIEWED	M BOTHA		

ZUTARI
IMPACT. ENGINEERED.



CLIENT



REV	DATE	REVISION DETAILS	APPROVED
T0	27/9/2022	FOR TENDER PURPOSES	AC KEYSER

TENDER NOT FOR CONSTRUCTION		EB CONSULTING	
SCALE		SIZE	DATE
AS SHOWN			
		A3	
.....			
DRAWN		PA LEGG - ECSA 890448	
R BEESLAAR			
ZUTARI			
DESIGNED			DATE
R BEESLAAR			
.....			
REVIEWED			
M BOTHA		AC KEYSER ECSA-200670108	

PROJECT

REGIONAL WASTE MANAGEMENT FACILITY

TITLE

SEWER DETAILS:
INSPECTION CHAMBER

DRAWING NUMBER					
PROJECT No.	WBS	TYPE	DISC	NUMBER	REV
1001661	0000	DRG	CC	0202	T0