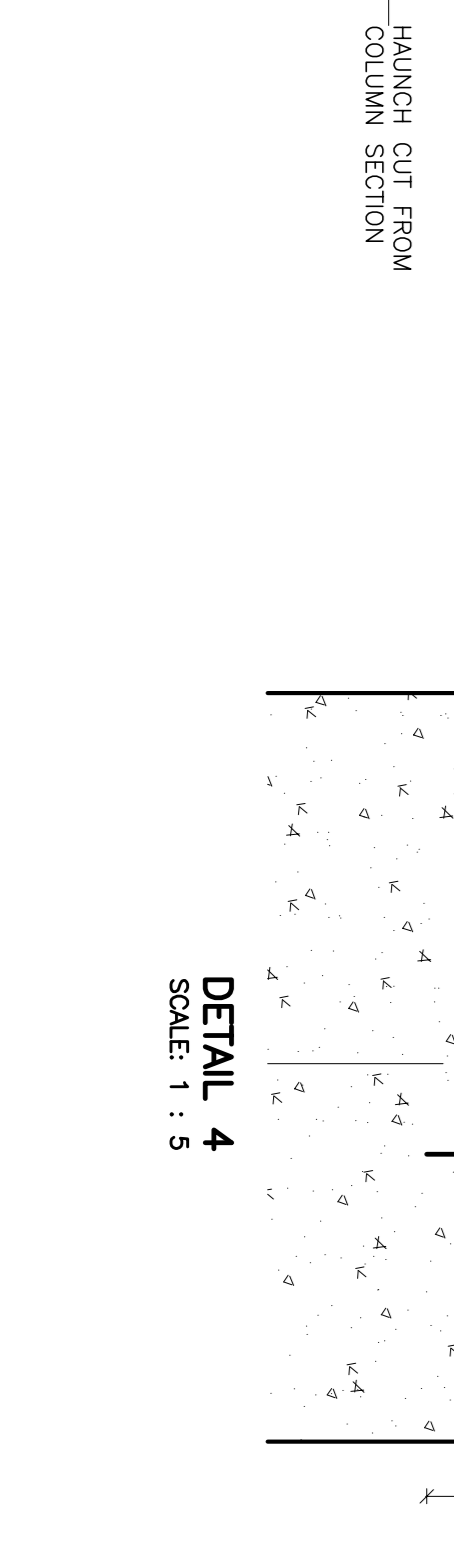
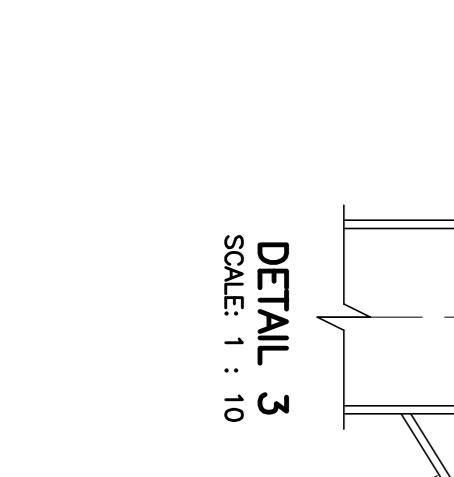
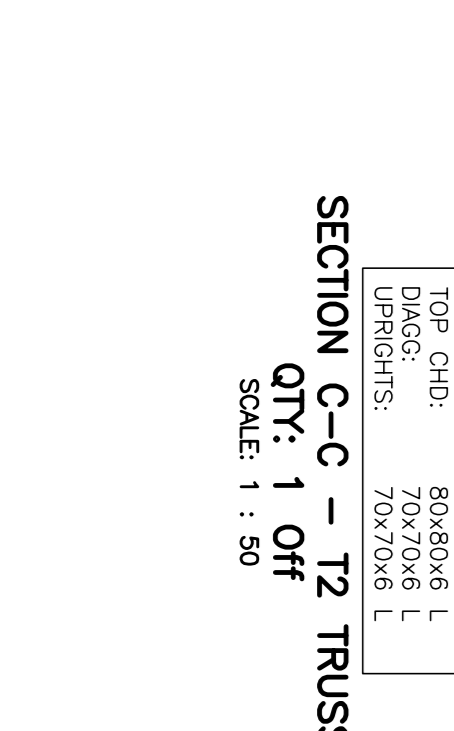
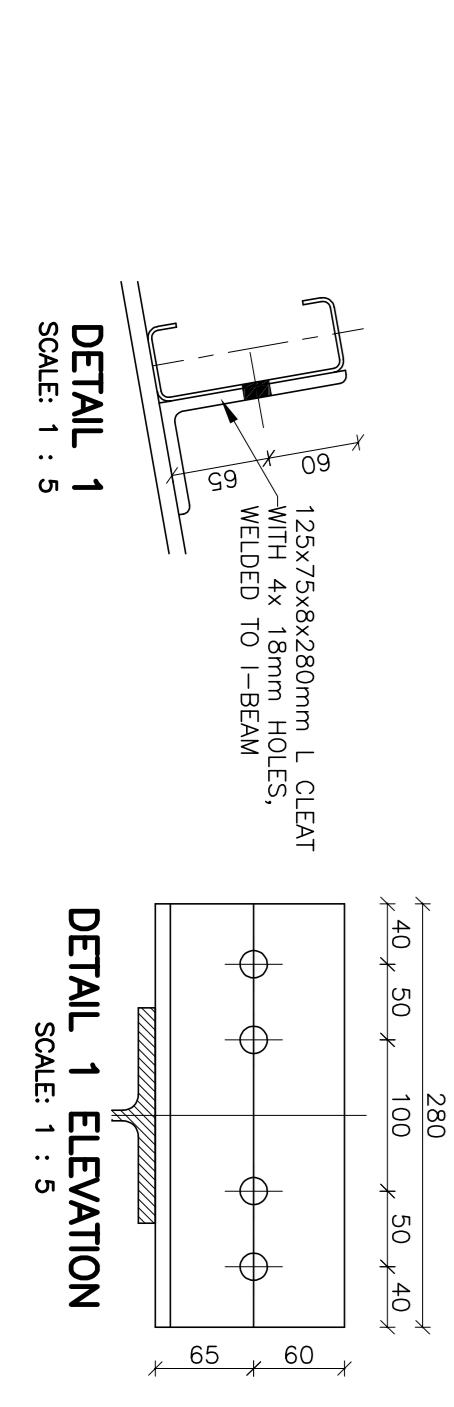
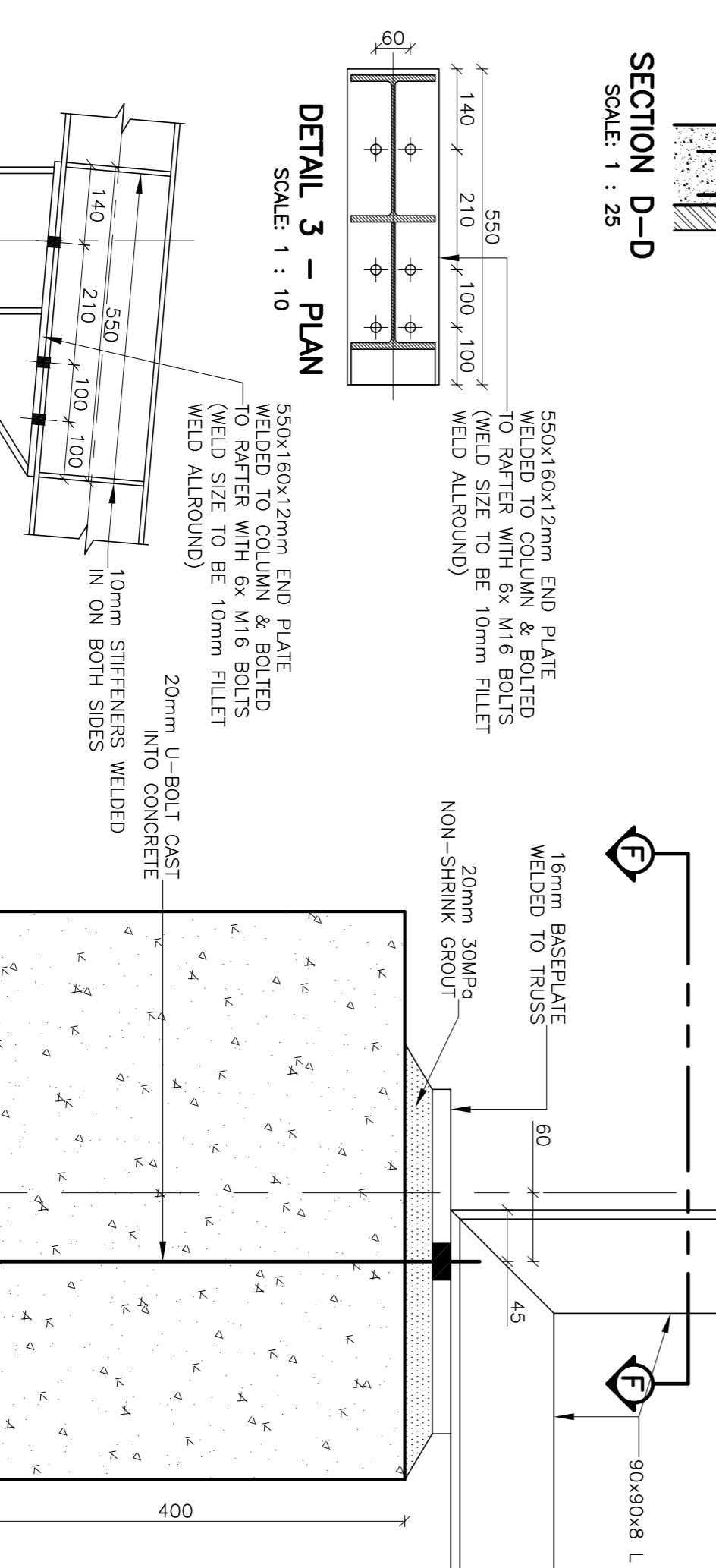
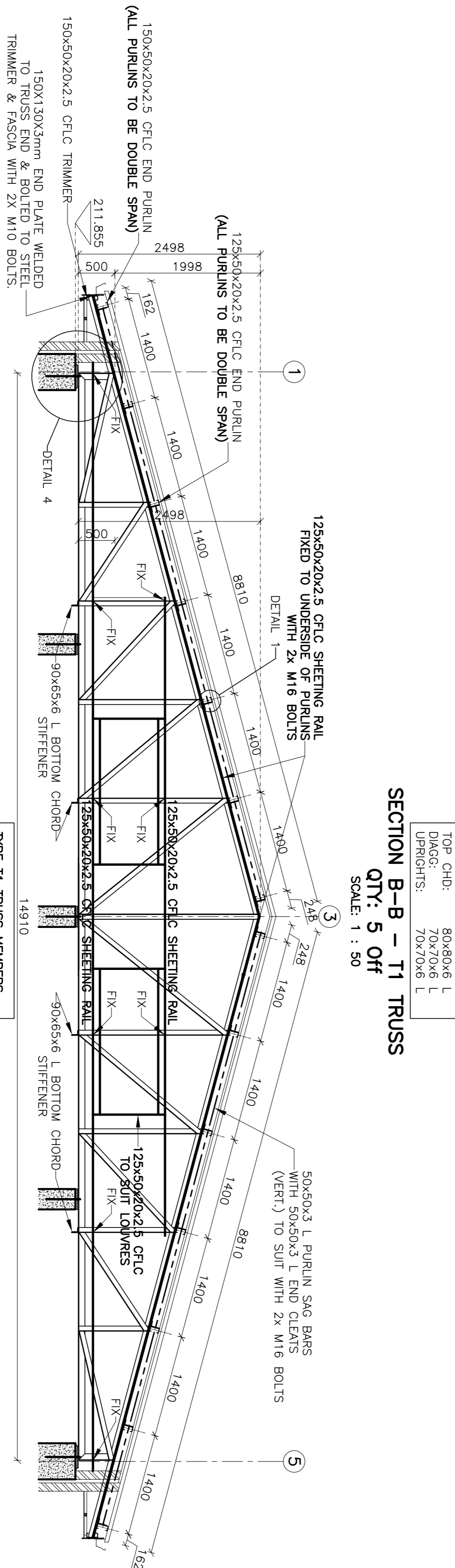
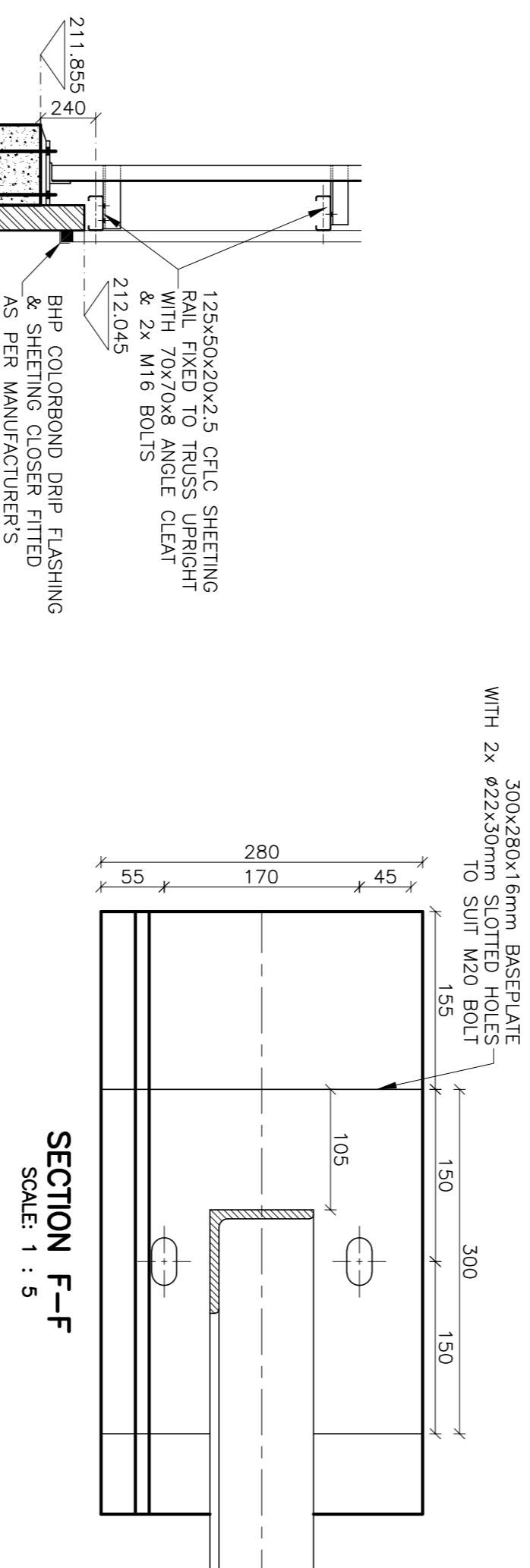
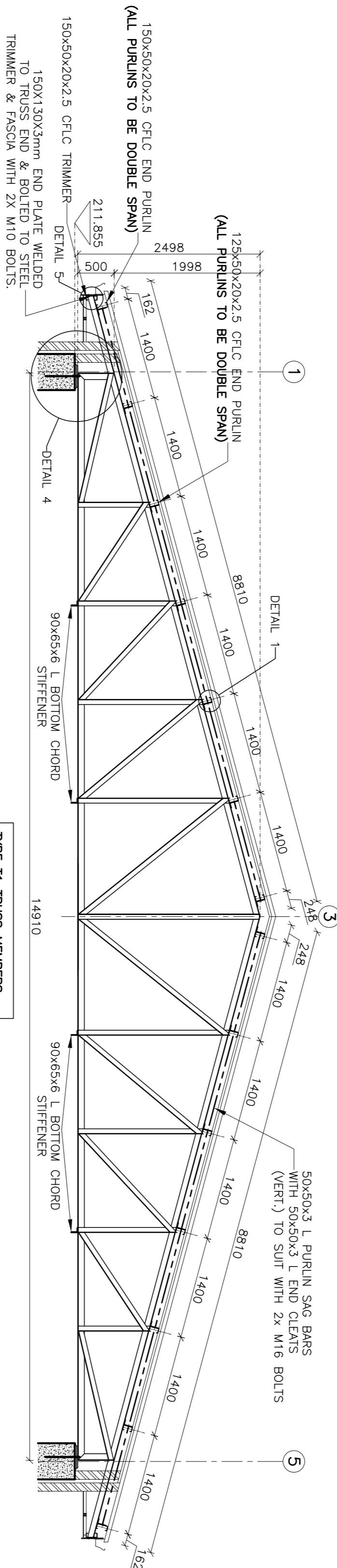
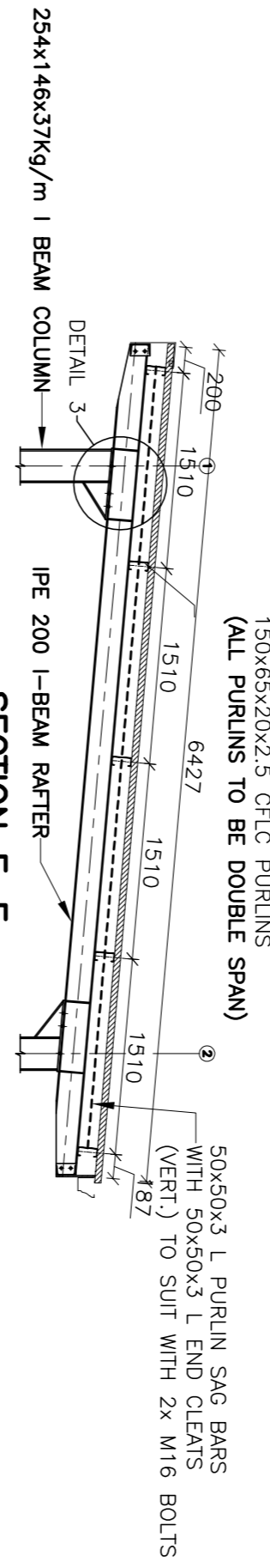
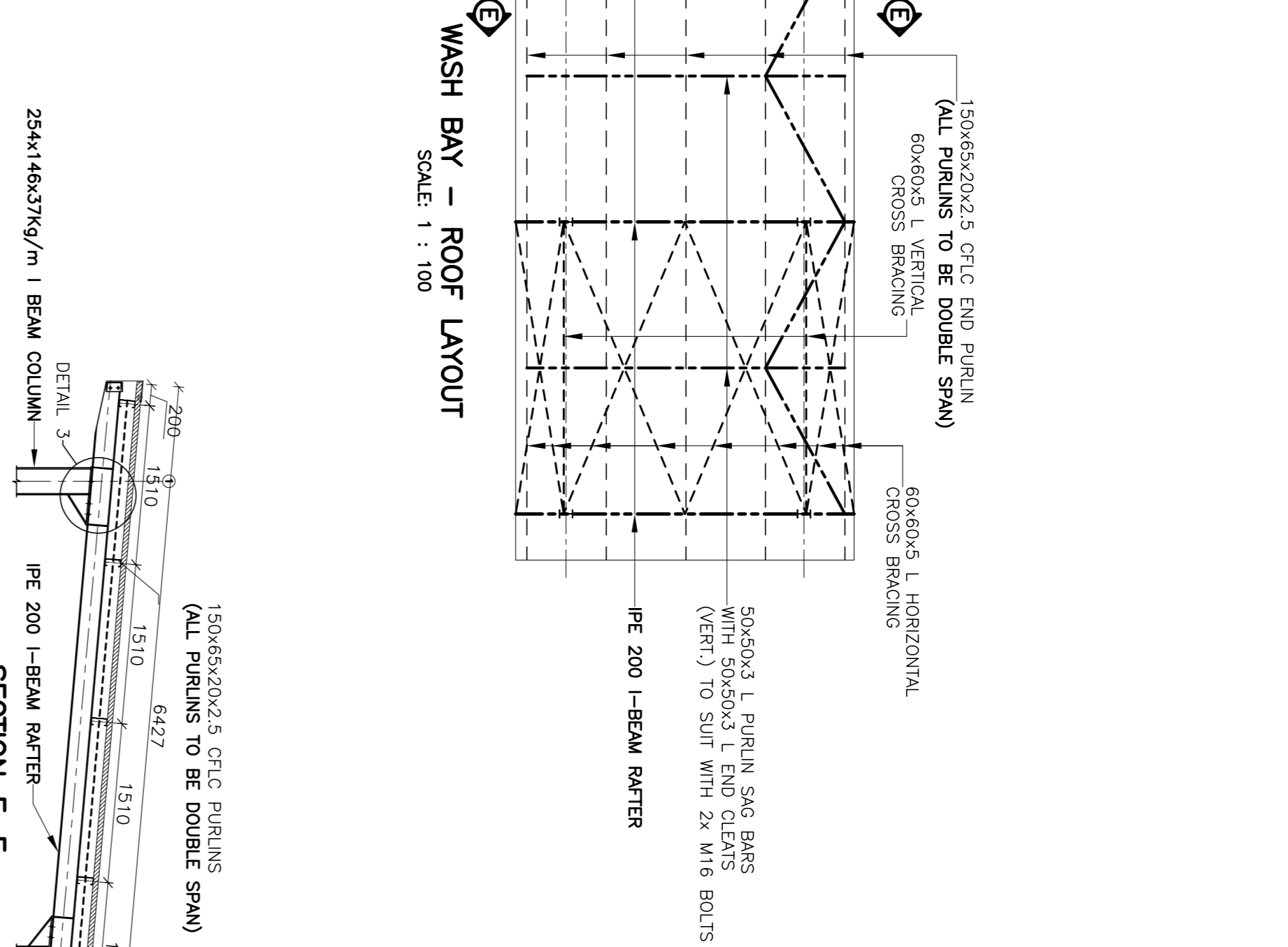
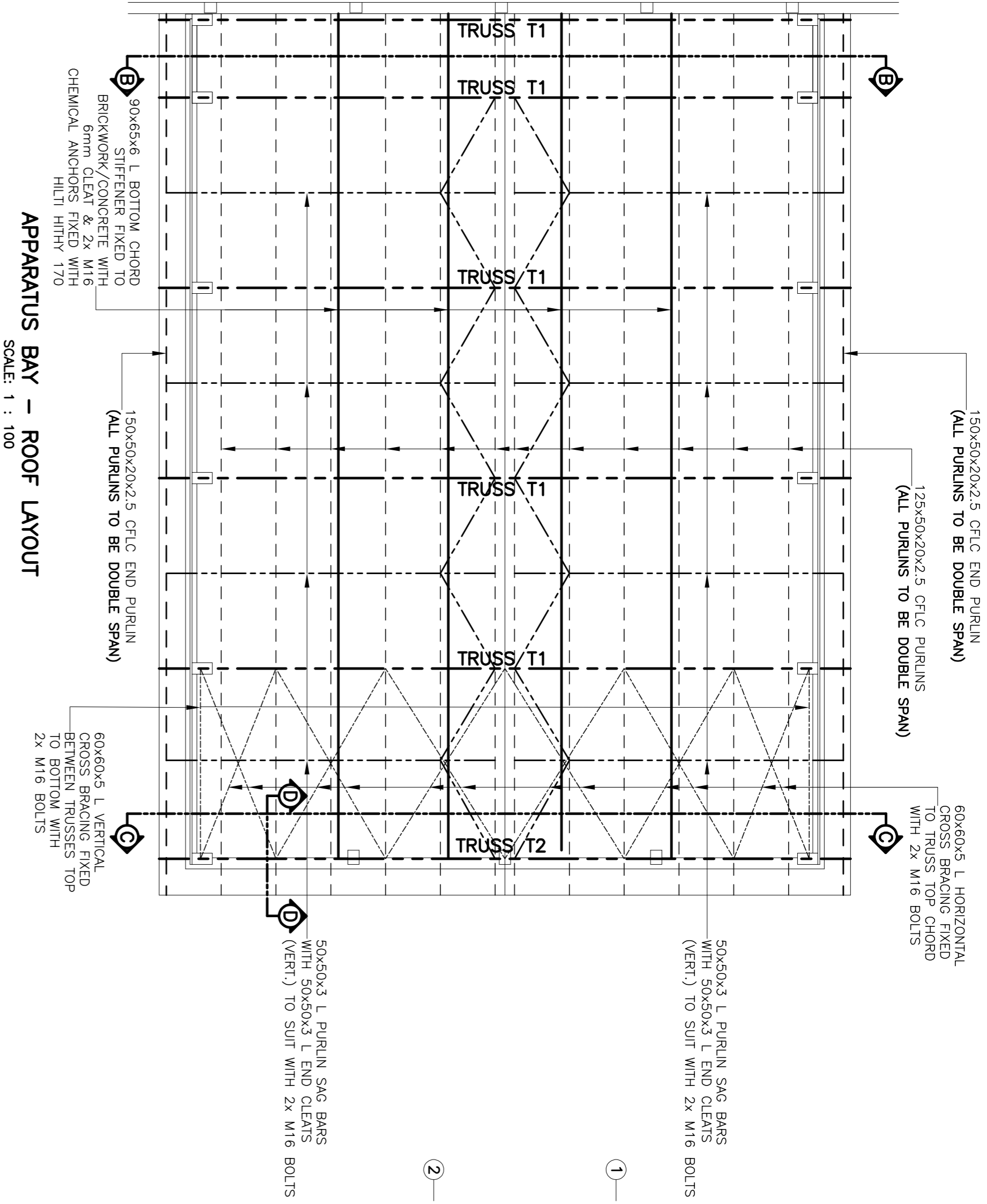


THIS DRAWING AND DESIGN ARE CONFIDENTIAL AND THE PROPERTY OF KANTEY & TEMPLER AND SHALL NOT BE REPRODUCED OR TRANSMITTED IN ANY FORM OR BY ANY MEANS, ELECTRONIC OR MECHANICAL, INCLUDING PHOTOCOPYING, RECORDING, OR BY ANY INFORMATION STORAGE AND RETRIEVAL SYSTEM, WITHOUT THE WRITTEN PERMISSION OF KANTEY & TEMPLER.

STRUCTURAL STEEL NOTES:

1. SHOP DETAILING, FABRICATION AND ERECTION SHALL BE IN ACCORDANCE WITH THE REQUIREMENTS OF SABS 0162-1984.
 2. 500mm STEEL SHALL BE MILD STEEL TO SABS 1431 GRADE.
 3. ALTERNATIVE SECTIONS MAY BE ACCEPTED, TO SUIT AVAILABLE SUPPLIERS, PROVIDED THERE IS NO LOSS OF STRENGTH OR STIFFNESS OR, WHERE RELEVANT, APPEARANCE, HOWEVER, PRIOR CONSENT MUST BE OBTAINED FROM THE ENGINEER.
 4. ALL BOLTS TO BE GRADE 8.8 AND M16 MINIMUM SIZE, UNLESS STATED OTHERWISE. WHERE MAIN FRAME JOINTS ARE BOLTED, SHOP DETAILING OF MEMBERS SHALL MAKE PROVISION FOR SLIP AT SUCH JOINTS, TO PRESERVE FULL STRENGTH OF JOINTS. ALL JOINTS SHALL BE DESIGNED TO TRANSMIT THE SHEAR FORCES AND MOMENTS INDICATED ON THE DRAWING. ALL BOLTS & NUTS TO BE HOT DIPPED GALVANISED.
 5. ALL WELDS TO BE 7mm FILLET CONTINUOUS UNLESS OTHERWISE NOTED. WELDING SHALL BE DONE BY THE ENGINEER'S APPROVED WELDER. THE ENGINEER'S APPROVAL OF THE WELDED JOINTS SHALL BE OBTAINED PRIOR TO THE START OF WELDING. THE PRIOR APPROVAL OF THE ENGINEER, WELDED METAL SHALL BE FUSED WITH THE PAREN METAL ALONG ALL JOINTS. ALL WELDS SHALL BE CLEANED, SMOOTHLY FINISHED, WITHOUT POROSITY OR CRACKS, REGULAR AND OF UNIFORM CONTOUR.
 6. ALL DIMENSIONS AND LEVELS TO BE VERIFIED ON SITE.
 7. ALL BOLTS AND ANCHORS/WASHERS TO BE HOT DIPPED GALVANISED TYPE AND SPECIFICATION.
- CORROSION PROTECTION
- STRUCTURAL STEEL
1. ALL STEEL SHALL BE PREPARED TO SWEDISH STANDARD - SIS 055090 OF 1967 TO SA 2.5
 2. GALVANIZING PROFILE 40-75 MICRONS.
 3. GALVANIZING CALCULATING IN ACCORDANCE WITH SABS 765 TO A MINIMUM THICKNESS OF 650 G/M.



No	DESCRIPTION	REV	DATE	APP
A	ISSUE FOR TENDER	TH	30-03-22	NA

DESIGNED	INITIALS	SIGN	DATE
T.H			30-Mar-22
PROJECT ENG.	C.G.A		30-Mar-22
APPROVED	C.G.A		30-Mar-22

KANTEY & TEMPLER
CONSULTING ENGINEERS
Engineering African Development
P O BOX 458 GEORGE SOUTH AFRICA 6520 TEL: +27 44 824 2177

CLIENT
Garden Route
DISTRICT MUNICIPALITY

PROJECT
NEW FIRE STATION FOR GARDENROUTE DISTRICT MUNICIPALITY
ERF 22494/22495
GEORGE

TITLE
ROOF STRUCTURAL LAYOUTS, SECTIONS & DETAILS

DRW No. **G5211BA-SE-004**

REV No. **A**