

THIS DRAWING AND DESIGN ARE CONFIDENTIAL, AND THE PROTECTION OF KANTEY & TEMPLER AND MAY NOT BE DISCLOSED TO ANY THIRD PARTY, COPIED/REPRODUCED IN WHOLE OR IN PART WITHOUT THE WRITTEN PERMISSION OF KANTEY & TEMPLER.

© COPYRIGHT

ROOF SPECIFICATIONS

- TYPE A ROOF (ADMIN/GROUND CREW)**
0.53mm AZ150 G550 "Klip-Lok 410" Zincalume ribbed steel sheets with a clean Colorplus® finish in approved standard colour to suit on one side and a standard backing coat to reverse side, fixed to timber purlins as per manufacturer's specifications. (Colour Charcoal).
Sisalation FR430 grade aluminium foil insulation sheathing fixed onto timber purlins with 150mm stapled baps and double-sided tape at edges where required as per manufacturer's specifications. Roof sheathing laid onto sisalation and fixed to 76 x 50mm grade 5 S.A. Pine timber purlins @ 1000mm centres max fixed to predrilled roof trusses @ 1000mm max. Roof trusses to be fixed to brick wall with 38 x 1,2mm galv steel roof anchors built into brickwork six courses down. Predrilled roof trusses manufactured by specialist in accordance with SABS. 0162.0163.
- TYPE B ROOF (APPARATUS BAY ROOF)**
0.53mm AZ150 G550 "Klip-Lok 410" Zincalume ribbed steel sheets with a clean Colorplus® finish in approved standard colour to suit on one side and a standard backing coat to reverse side, fixed to new purlins as per manufacturer's specifications. (Colour Charcoal). Install 30mm Laminboard as per manufacturer's specifications above new steel purlins. New steel purlins and trusses as per engineer's specifications.
- TYPE D ROOF (WASH BAY ROOF)**
0.53mm AZ150 G550 "Klip-Lok 410" Zincalume ribbed steel sheets with a clean Colorplus® finish in approved standard colour to suit on one side and a standard backing coat to reverse side, fixed to new purlins as per manufacturer's specifications. (Colour Charcoal). New steel purlins and offers as per engineer's specifications.

A	ISSUE FOR TENDER	TH	30-03-22	NA	
No	DESCRIPTION	DW	DATE	APP	
	INITIALS	SIGN	DATE		
DESIGNED	T.H		30-Mar-22		
DRAWN	T.H		30-Mar-22		
PROJECT ENG.	C.G.A		30-Mar-22		
APPROVED	C.G.A		30-Mar-22		



KANTEY & TEMPLER

CONSULTING ENGINEERS

Engineering African Development

P O BOX 458 GEORGE SOUTH AFRICA 6530 TEL: +27 44 874 2177

CLIENT



PROJECT
NEW FIRE STATION FOR
GARDENROUTE DISTRICT
MUNICIPALITY
ERF 22494/22495
GEORGE

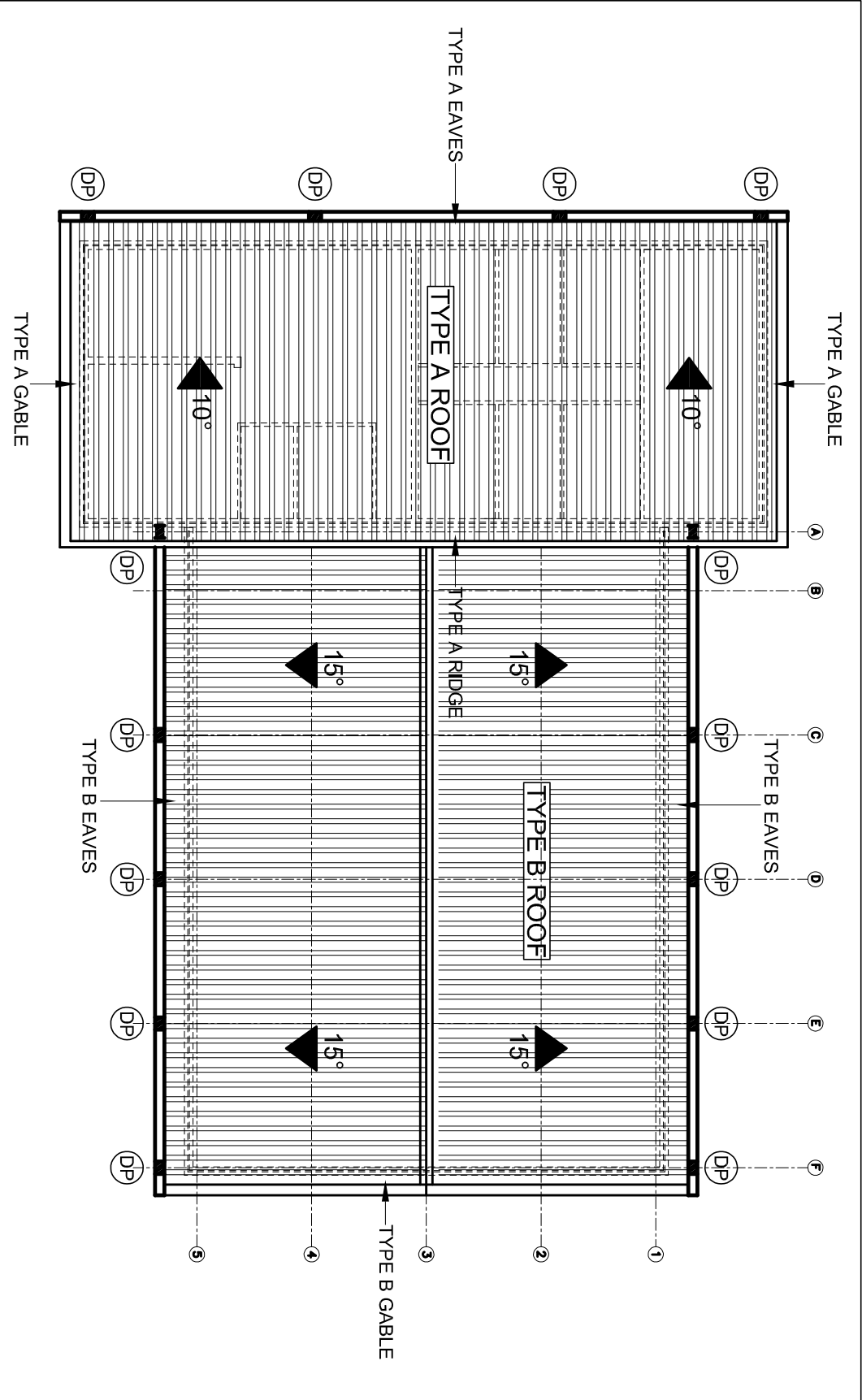
TITLE

ROOF PLANS

DW No. G5211BA-ARC-004

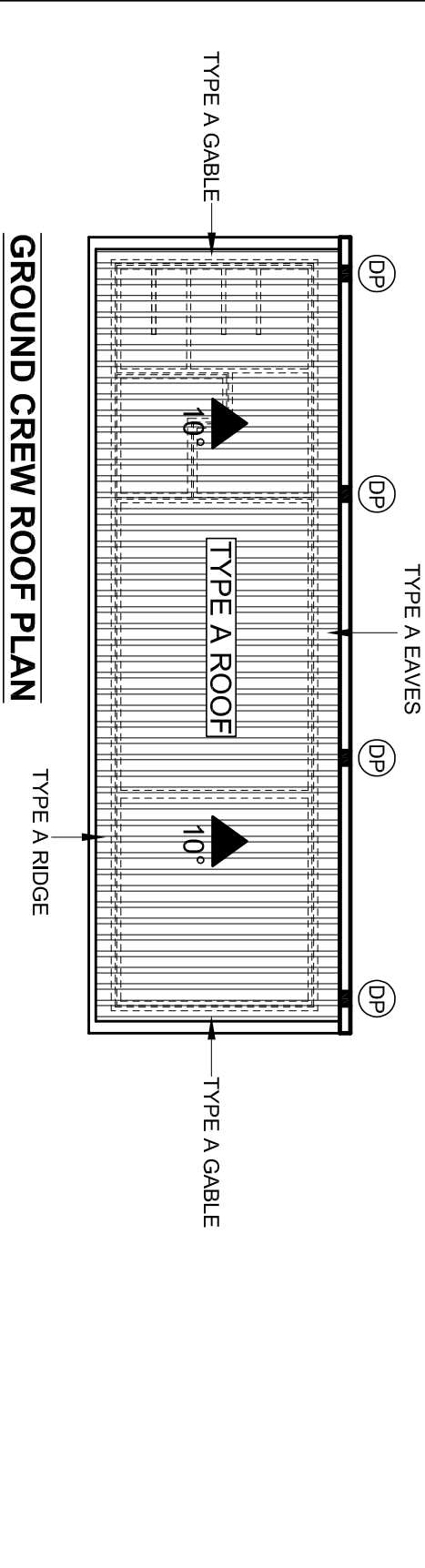
REV No

A



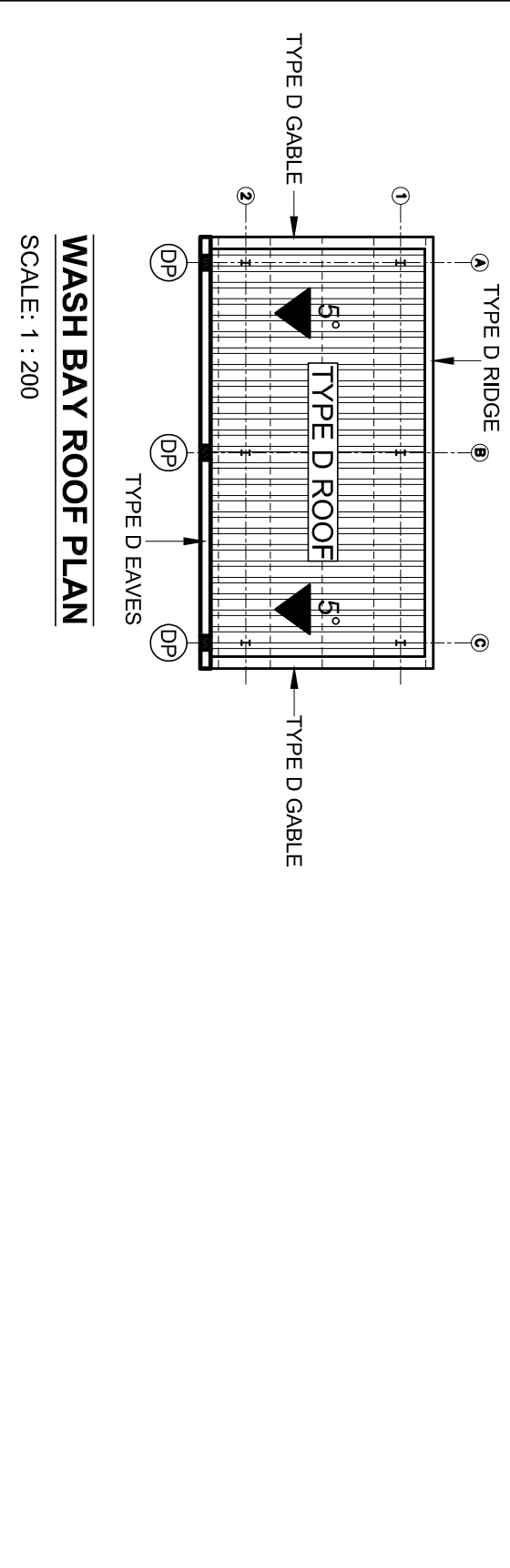
ADMIN / APPARATUS BAY ROOF PLAN

SCALE: 1 : 200



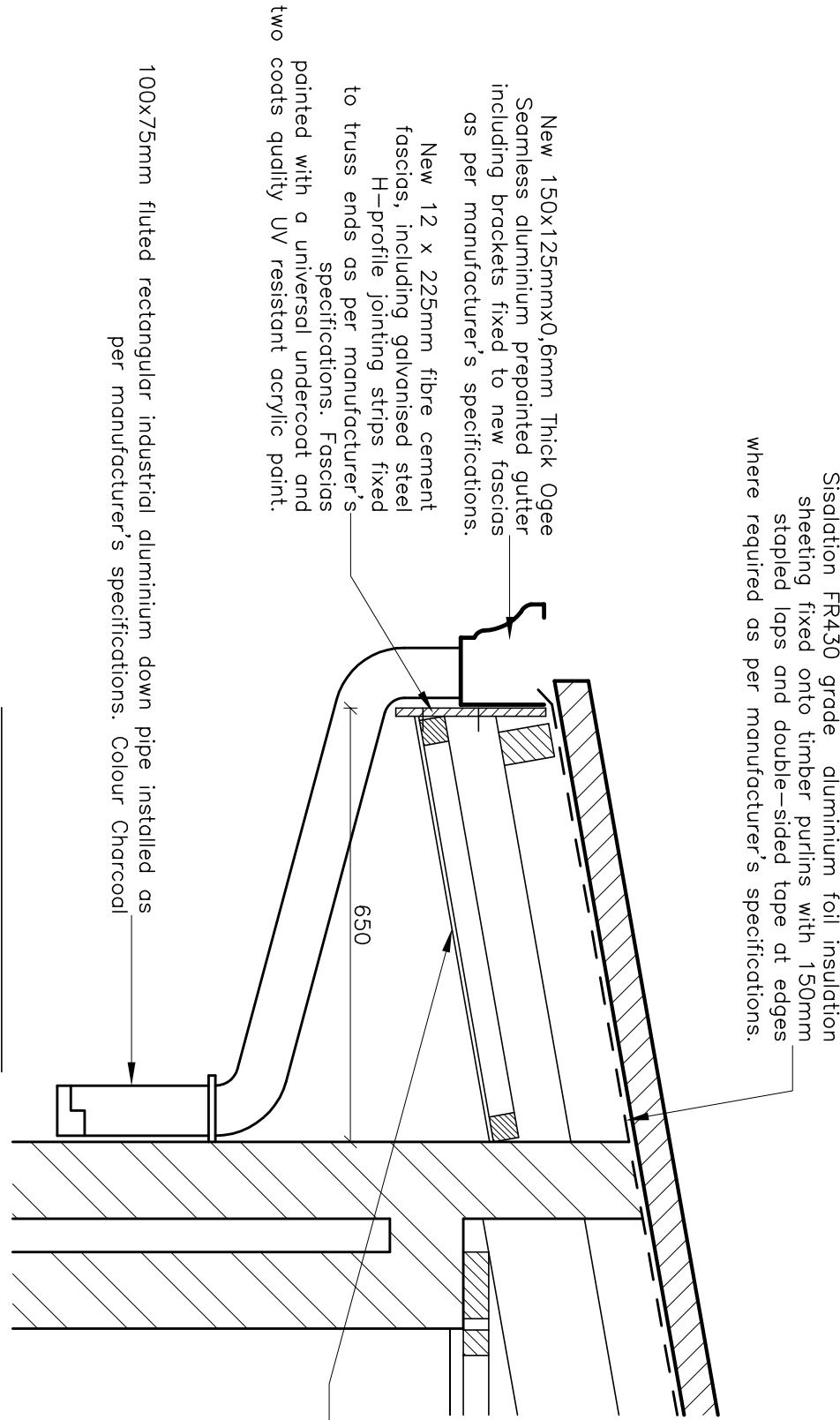
GROUND CREW ROOF PLAN

SCALE: 1 : 200



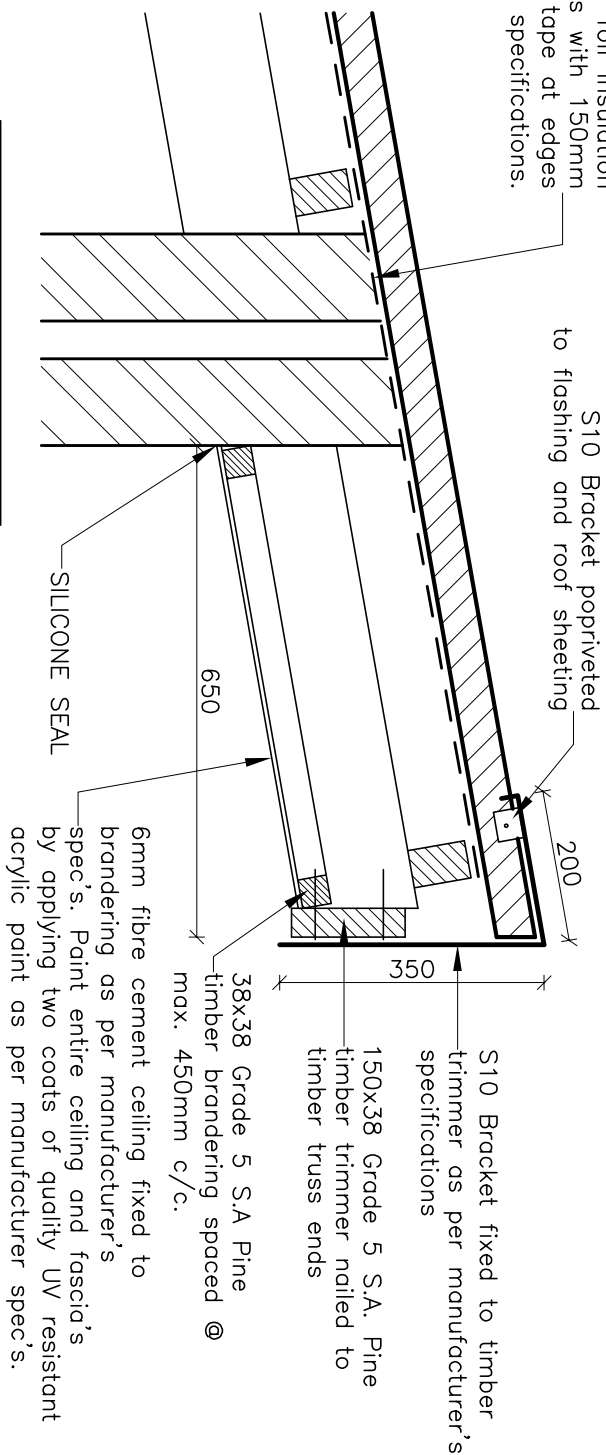
WASH BAY ROOF PLAN

SCALE: 1 : 200



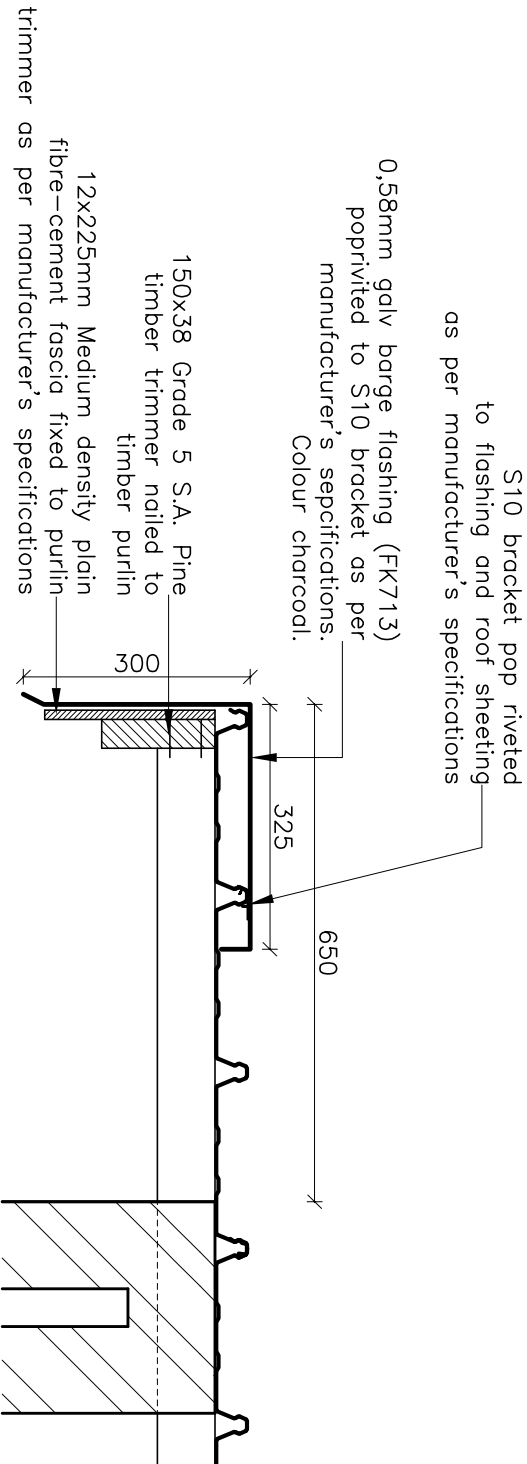
TYPE A EAVES DETAIL

SCALE: 1:10



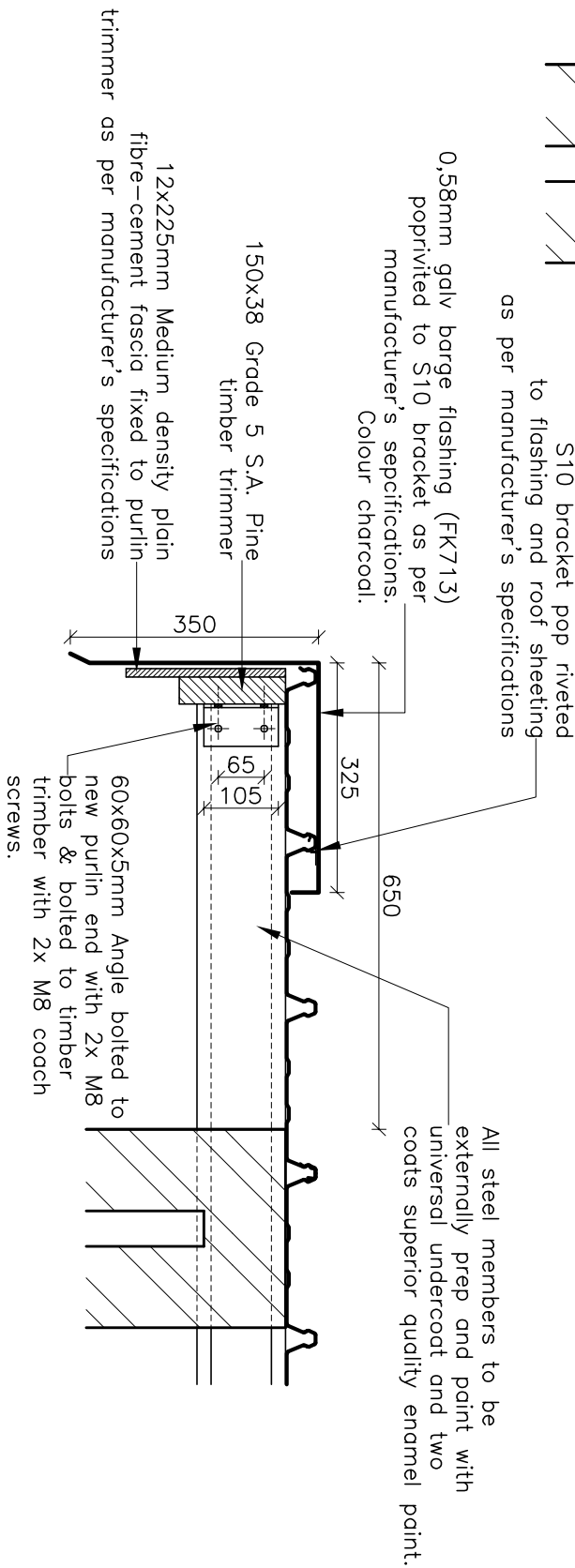
TYPE A RIDGE DETAIL

SCALE: 1:10



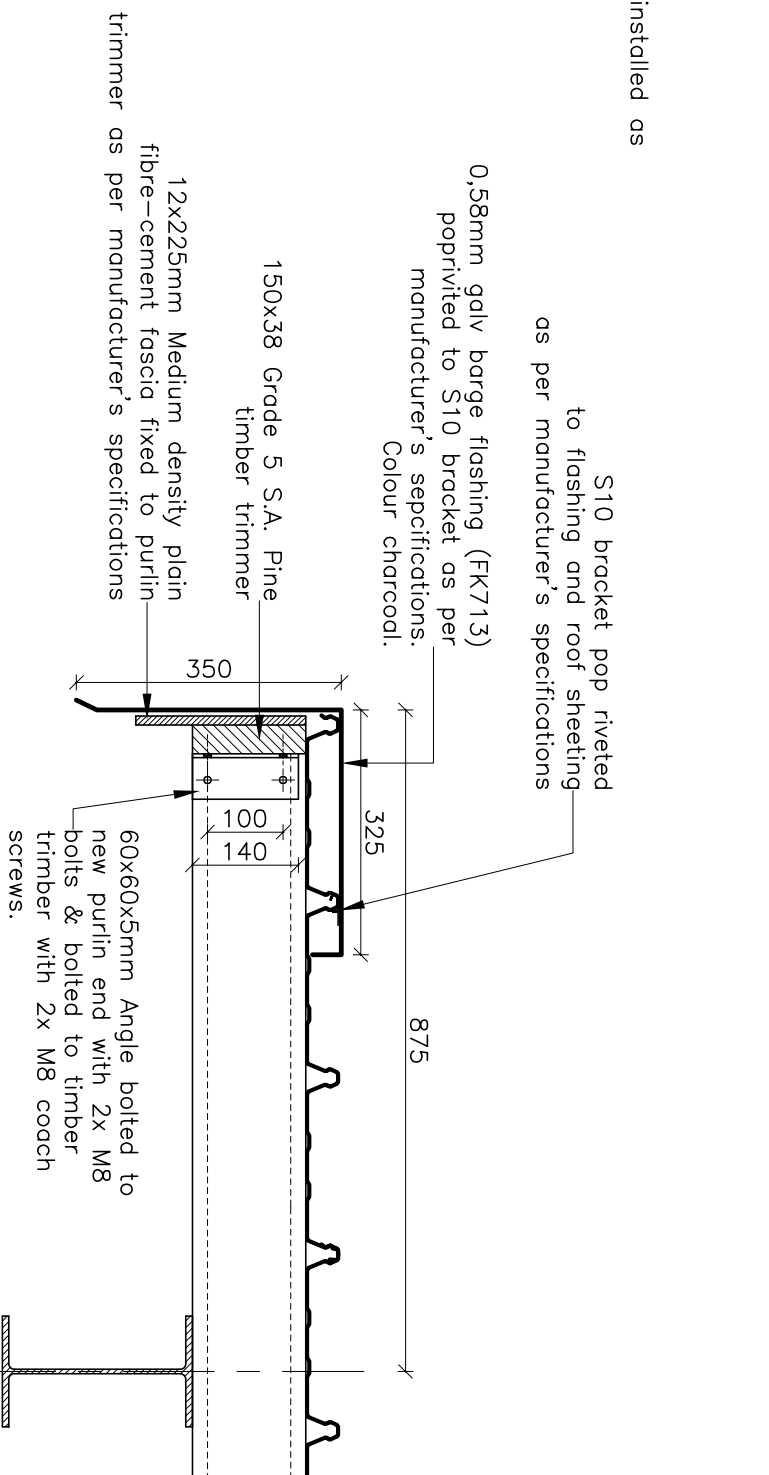
TYPE A GABLE DETAIL

SCALE: 1:10



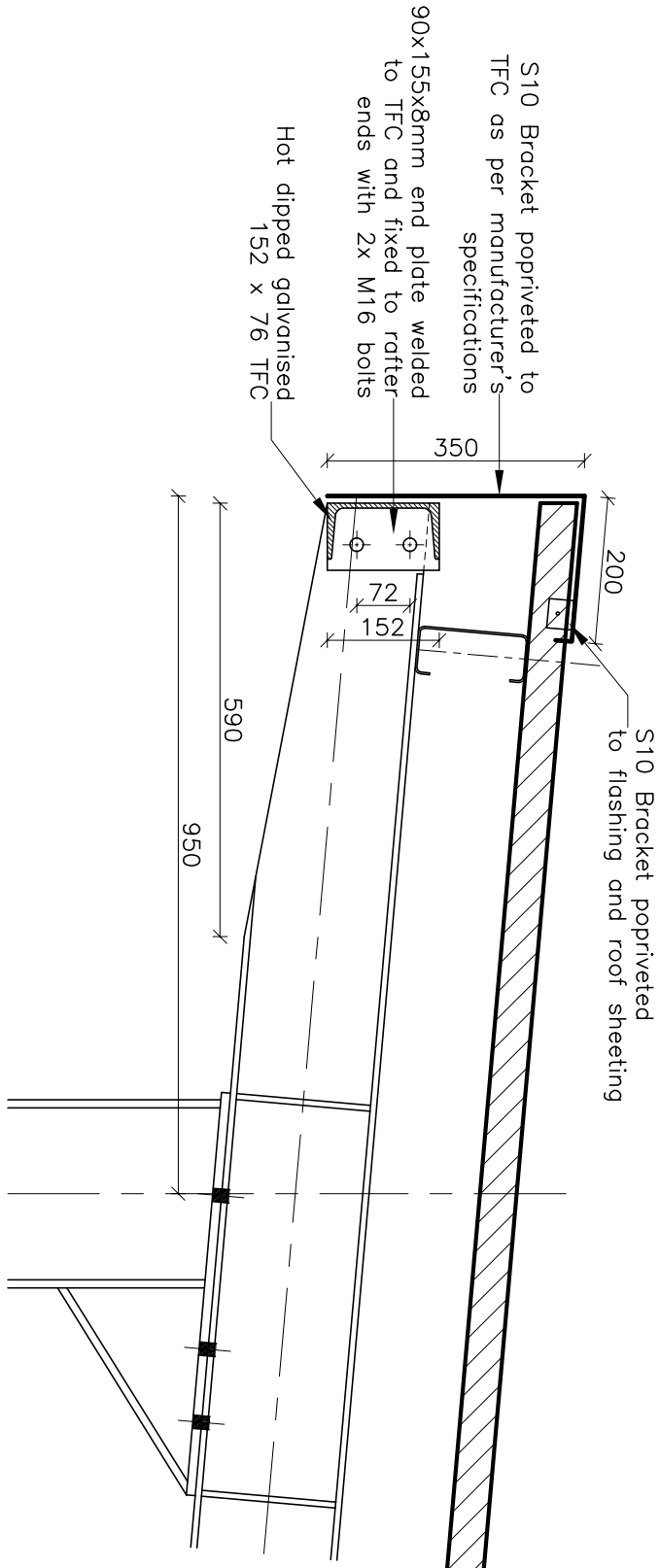
TYPE B GABLE DETAIL

SCALE: 1:10



TYPE D EAVES DETAIL

SCALE: 1:10



TYPE D RIDGE DETAIL

SCALE: 1:10