



**Western Cape  
Government**

Community Safety

**BETTER TOGETHER.**

# ***GARDEN ROUTE IDP BUDGET PMS REPRESENTATIVE FORUM MEETING: DOCS***

24/11/ 2020

Mr Fuad Davis (JDMA REP)

# OVERVIEW:

1. Rationale for the Safety Priority approach
2. Safety Priority Theory of Change
3. What is innovative/new about the Safety approach?
4. Implementation of Safety Priority via the JDMA in the Municipalities
5. Linkages with other Priorities/VIPs
6. Estimated Budget & Programmes

# 1. Rationale for the Safety Priority approach

# Key messages

## Broader context for the Safety Recovery Priority

### Pre-COVID 1<sup>st</sup> surge “PSP – VIPs”

#### Safety Plan:

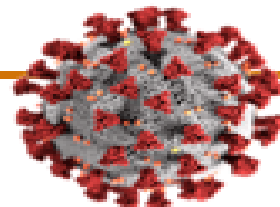
- Reduce Murder Rate by 50%
- 10 City Priority Areas – LEAP officers
- Apex priorities all WCG Depts
- PDIA problem statement



### During COVID 1<sup>st</sup> surge “Recalibration”

#### Key Learnings:

- Hotspot geographic focus – shared purpose
- Data/ evidence led; innovations; agility
- Multi-sectoral relationships matter
- Human-centric approach
- Impact of lockdown on homicide and trauma



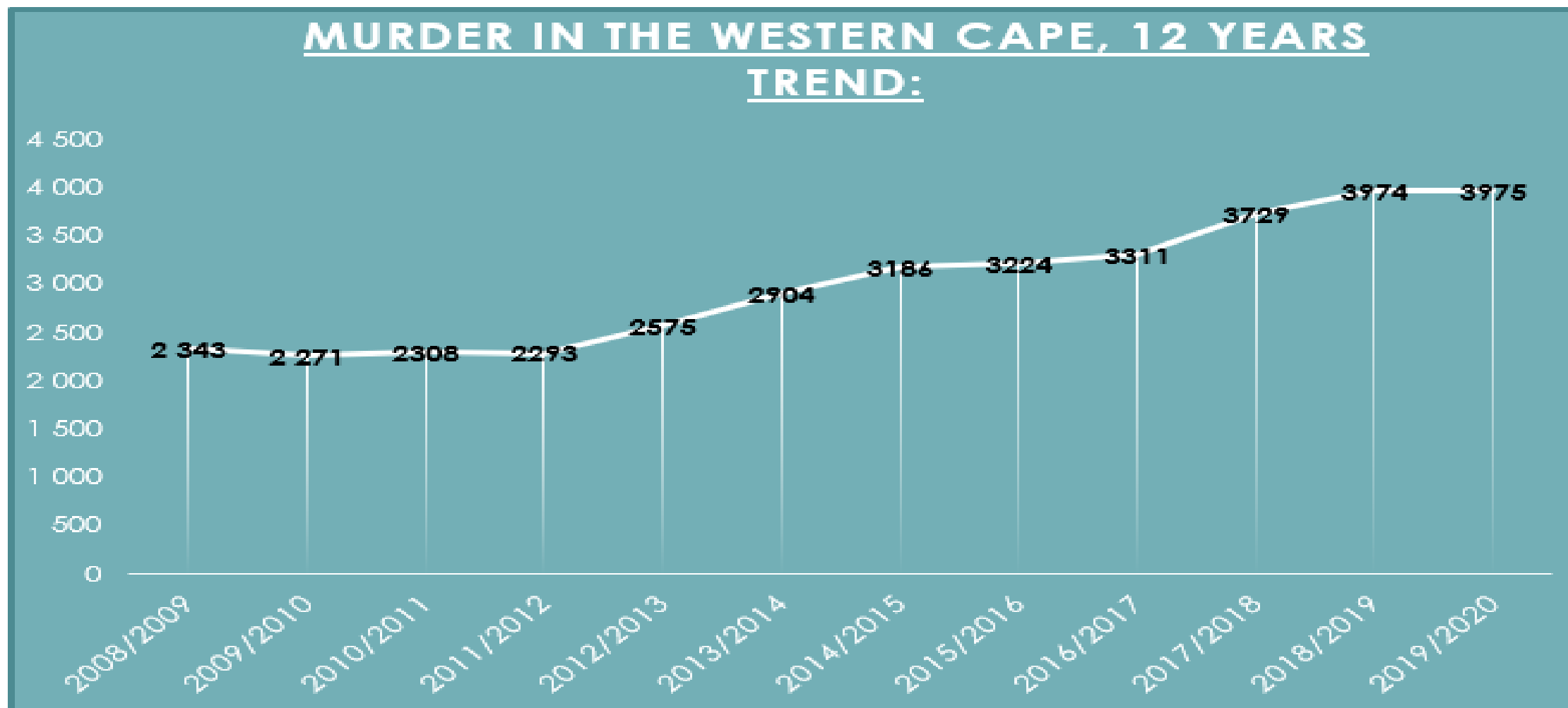
### Post-COVID 1<sup>st</sup> surge “Recovery”

#### Re-aligned Intent:

- Align violence prevention and enforcement
- Implement in local geographic areas
- Evidence/data-led approach

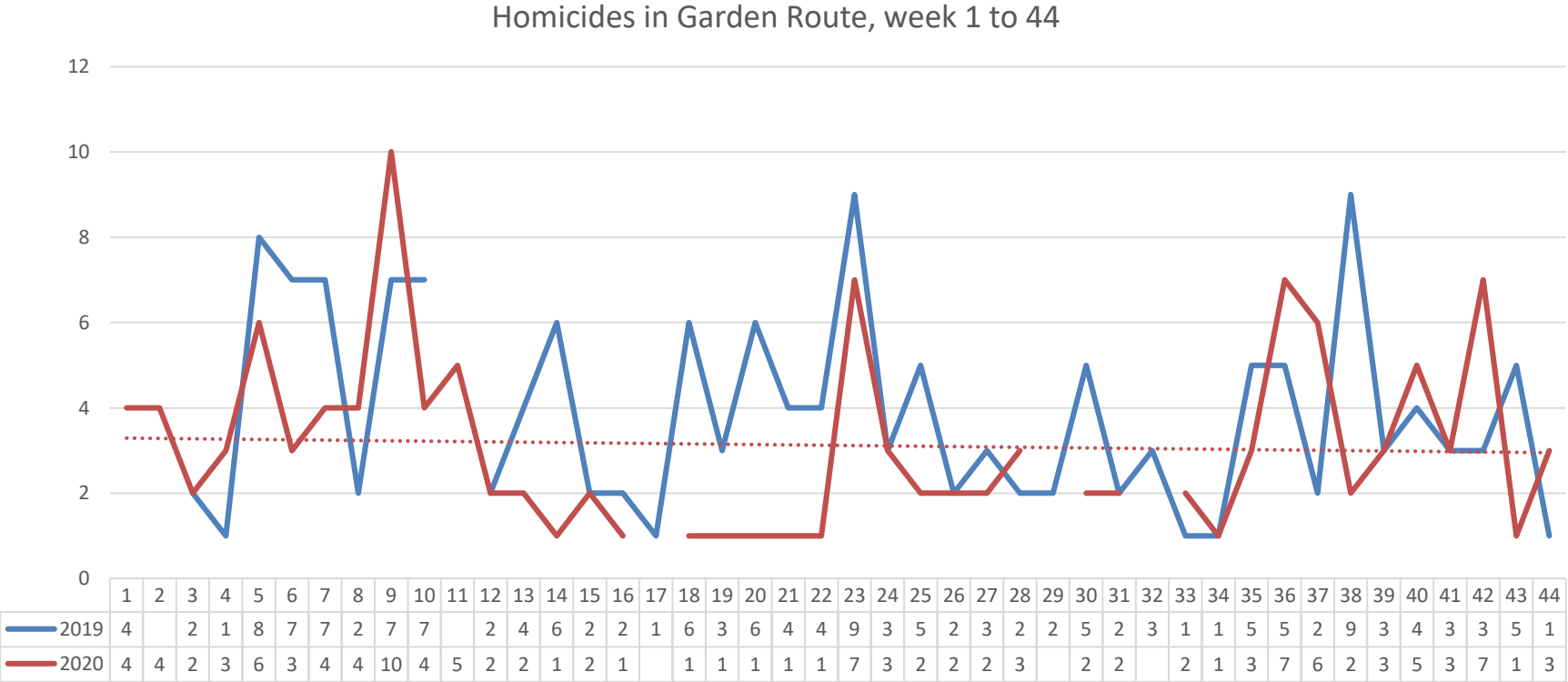


# 12 years trend in murder in the Western Cape



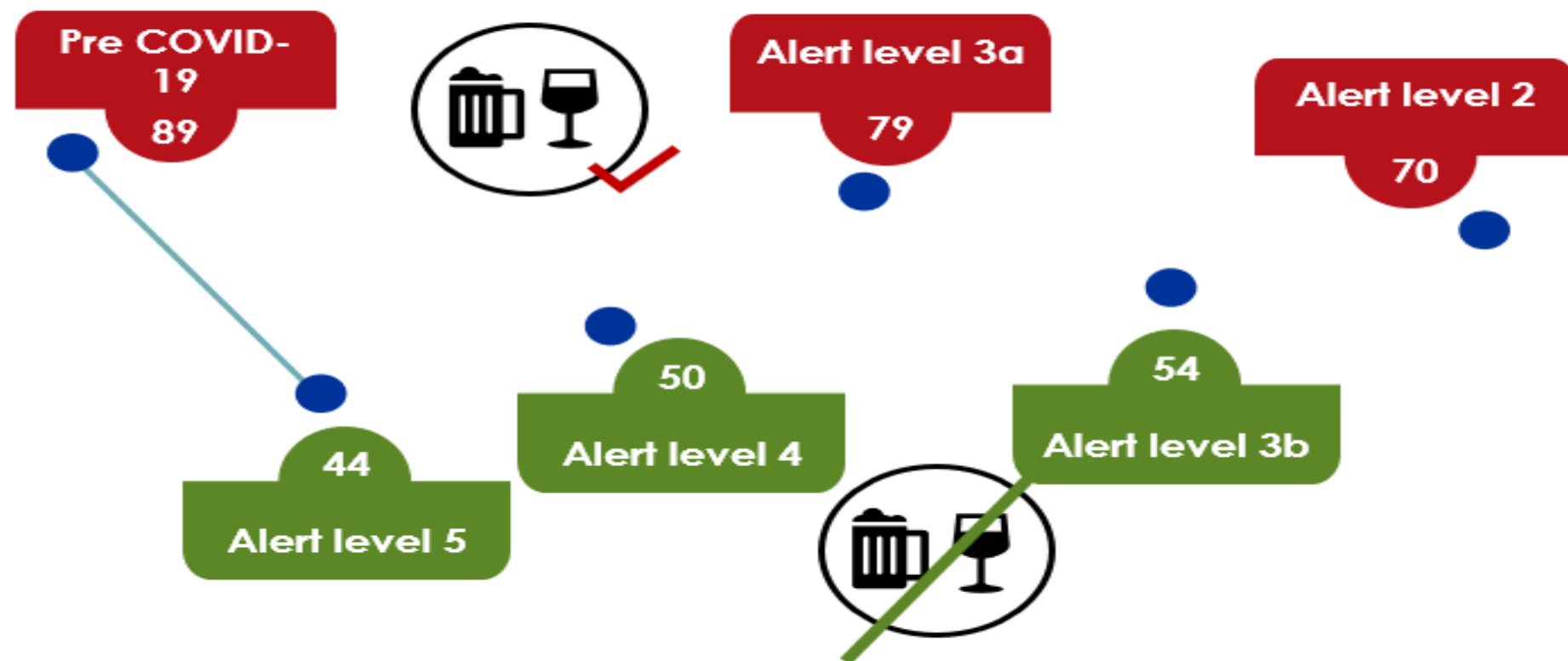
# Garden Route District Homicides week 1-44

In 2020 thus far, 128 homicides were recorded in Garden Route compared with 163 in 2019. This is a 21.47% reduction from the previous year. KwaNongaba reported the highest number of homicides (22), followed by Thembaletu (21).



## Trauma admissions decreased during both alcohol bans:

Average number of trauma patients in emergency centres per day during the different alert levels:



Source: HECTIS

# Defining Safety:

## Safety definition

*Safety is an aspiration. It is the state of being free from crime and violence. Jobs, safety, and a sense of belonging are necessary conditions to well-being.*

*Safety requires a whole-of-society life-course approach. It combines law enforcement and a public health approach to violence prevention.*



# Rationale for Safety Priority Approach:

## **Evidence-based interventions:**

- International and local evidence
- Evidence for violence prevention and law enforcement

## **Thematic areas:**

Violence prevention

Law Enforcement

## **Surveillance/ data-led approach:**

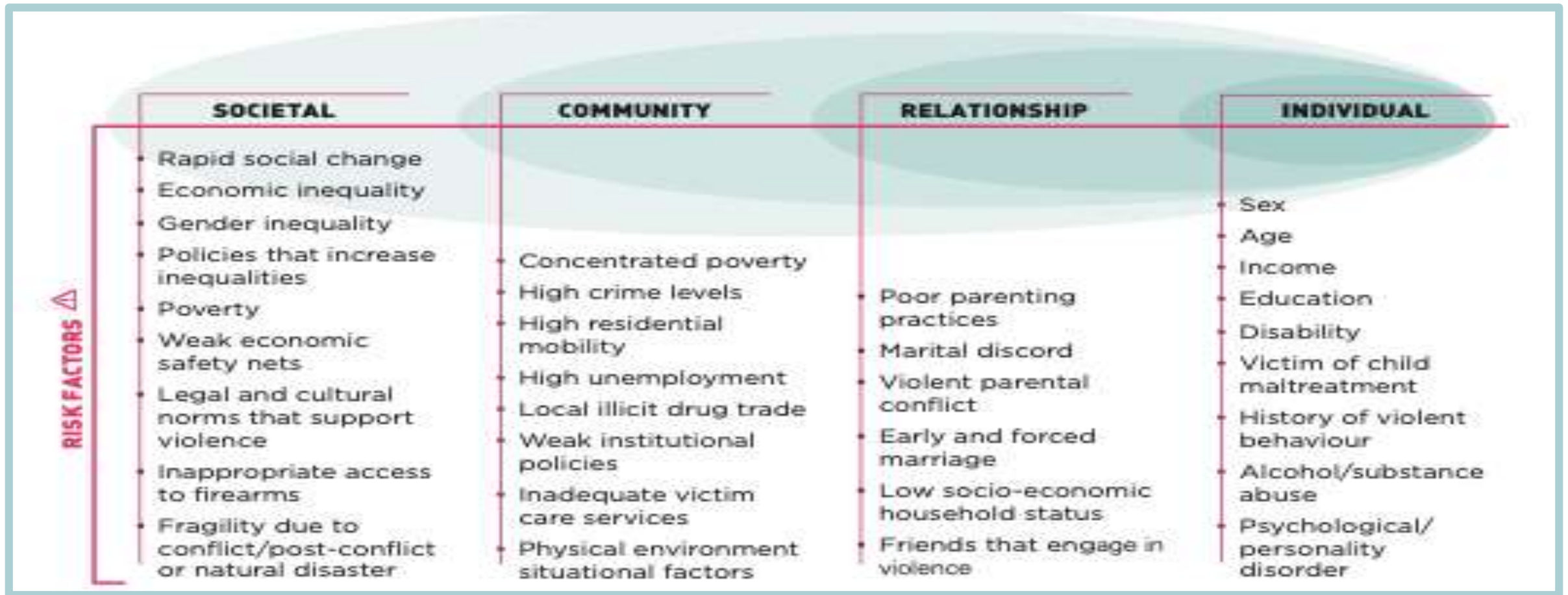
- Track the size and trends of the consequences of the problem
- Track the impact of the interventions



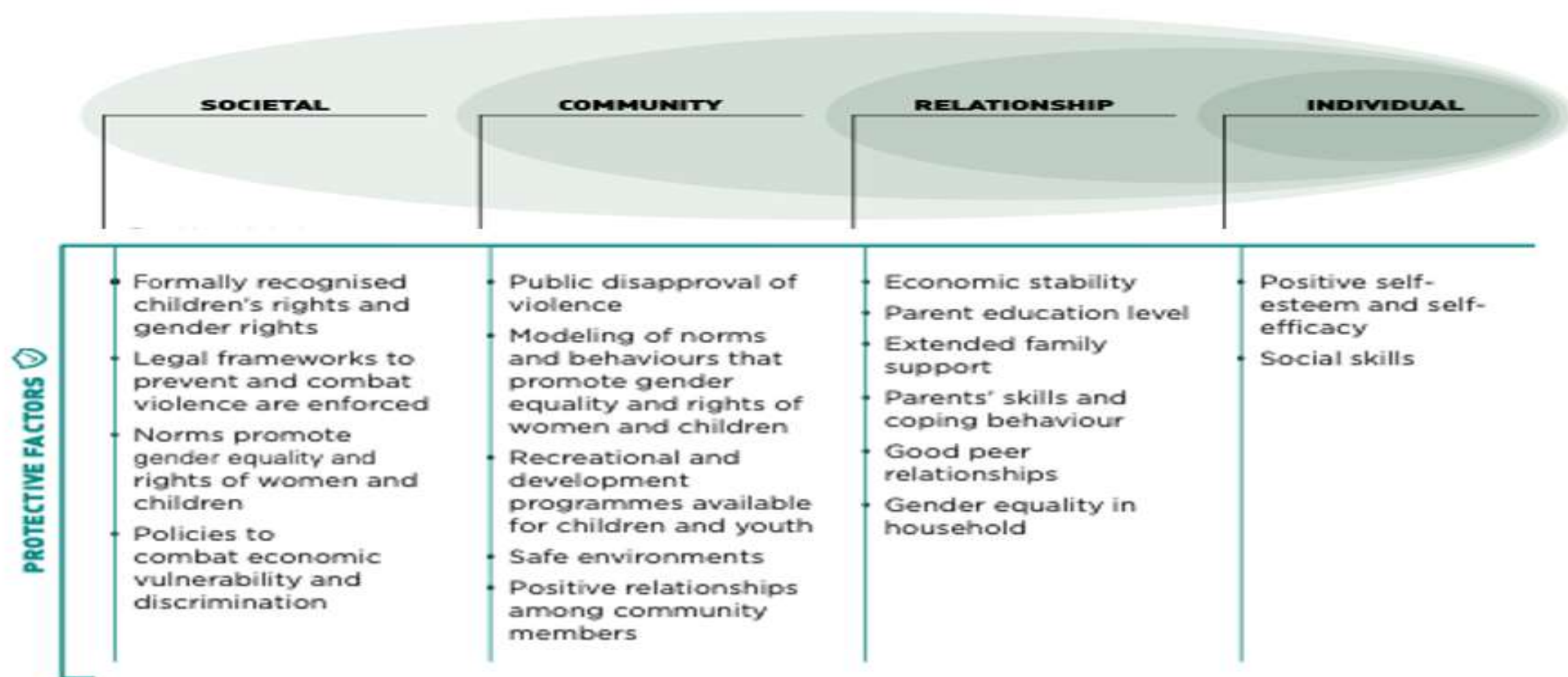
## **Area-based implementation:**

- All hotspot geographic areas
- Testing/ prototyping in specific geographic areas with rapid scaling

# Ecological model – Risk Factors for inter-personal violence:



# Ecological model – Protective Factors for inter-personal violence:



Source: Adapted from (2, 3)

## 2. Safety Priority Theory of Change:

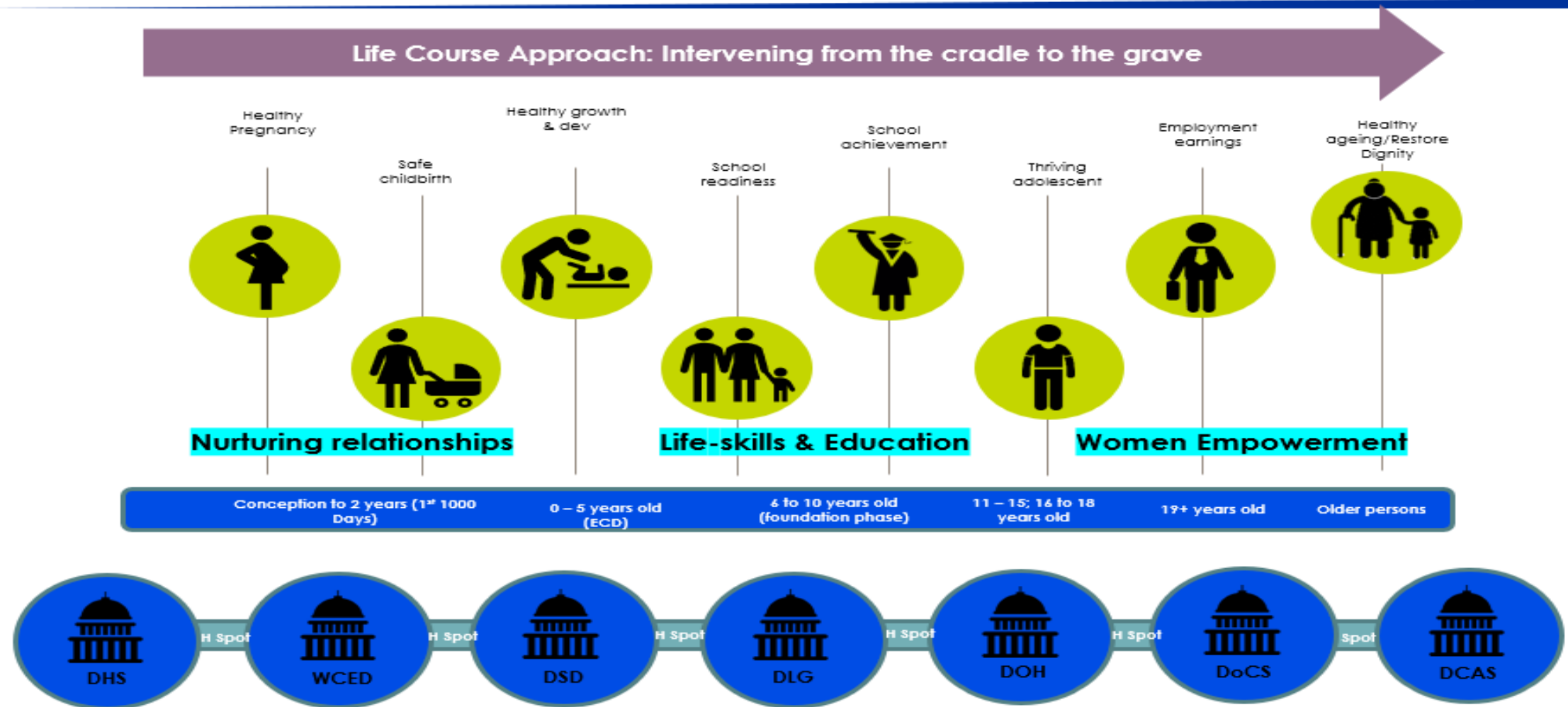
# Draft overall theory of change for Safety – residents feel and are safe (for consultation):

Theory of change	Need	Input	Output	Outcome	Impact
	<p>(i) Residents in the Western Cape experience high levels of crime and violence throughout the course of their lives.</p> <p>(ii) Safety responses of government are largely law enforcement and policing-focused, ignoring long-term contributors to violence.</p>	Coordinated evidence-led safety interventions encompassing violence prevention and law enforcement in hotspots of violence across the Province.	<p>(i) Area-based teams in hotspots of violence are established</p> <p>(ii) A basket of evidence-led safety interventions by different spheres of government are made available</p> <p>(iii) Communities participate in integrated safety interventions.</p>	Vulnerable communities and government co-develop holistic, context-specific and evidence-led approaches to safety to strengthen their resilience to crime and violence	All residents feel and are safe

## Evidence- what works?

1. **NURTURING RELATIONSHIPS** between children and parents/care-givers
2. **EDUCATION** and develop **LIFE SKILLS** in children
3. Reduce the availability and harmful use of **ALCOHOL**
4. Reduce access to **FIREARMS, KNIVES** and pesticides
5. Create **SAFE SPACES** through urban design
6. **EMPOWER** women socially and economically
7. Change social and cultural **NORMS**
8. Effective **VICTIM SUPPORT SERVICES**
9. Implementation considerations (**INTER-SECTORAL** action; **DATA-LED** action)

# Life Course Approach - the evidence:





# Proposed Surveillance/Evaluation strategy:

1. Develop an **integrated safety surveillance** data system:
  - a) At a minimum, data from DoH, SAPS, DOCS, WCED, DSD and DTPW should be included.
  - b) All data governance considerations would be dealt with by this workstream.
  - c) The system should generate reports and a dashboard for decision making.
2. Implement **evidenced-based interventions**:
  - a) Understand specific safety threats through data from the surveillance system.
  - b) Develop a basket of evidence-based interventions to be rolled out in the different areas.
  - c) Map current government and non-government interventions that exist in each area.
  - d) Identify which current interventions are evidence-based and should be strengthened.
  - e) Monitor (track progress against a set outcome) and evaluate (build the evidence of what works and what does not work, where and why).
3. Importantly, a **roadmap/ project plan** must be developed with timeframes attached to outputs, in order to monitor progress on delivery.



3. What is innovative/new about the Safety approach?

# Innovations - Learning from COVID-19

*What is new or innovative about the Safety Priority?*

- Relationships
- Build Networks
- Strengthen JDA



BUILDING  
SOCIAL CAPITAL

- Evidence-informed
- Data-led
- Agile decision-making & innovation

ENHANCING  
DYNAMIC EFFICIENCIES



- Prevention & Enforcement
- Implement in Local areas
- Dashboards & real-time data
- Digital engagement

#### 4. Implementation of Safety Priority via the JDMA in the Municipalities:

# Collaborative Governance – JDMA:

## *Collaboration with Municipalities via the JDMA*

1. **Joint District Approach**, supported by collaborative governance, advances developmental government and sustainable service delivery, underpinned by good governance.
2. The **Joint District Approach** is focused on an area-based and people-centred approach to provide a series of government services to citizens in a seamless and responsive manner.



## 5. Linkages with other Priorities

# Linkages between Jobs, Safety and Wellbeing:

Programmatic links will be made between Wellbeing and the other two streams on Jobs and Safety. **Human dignity is at the centre of all the work** that we do and is highly interrelated with Jobs and Safety.



# Process to confirm collaborative Safety Recovery Commitments :

## *Process and time-lines for confirmation of Safety Recovery commitments*

1. WCG Department MTEC and LG MTEC engagements.
2. SAPS, City and District Municipalities engagements.
3. Confirmation of area-based interventions and transversal support commitments.
4. Implementation and co-ordination via JDMA Hotspot teams & PTM.

**Next 90 days**

**Short-term**

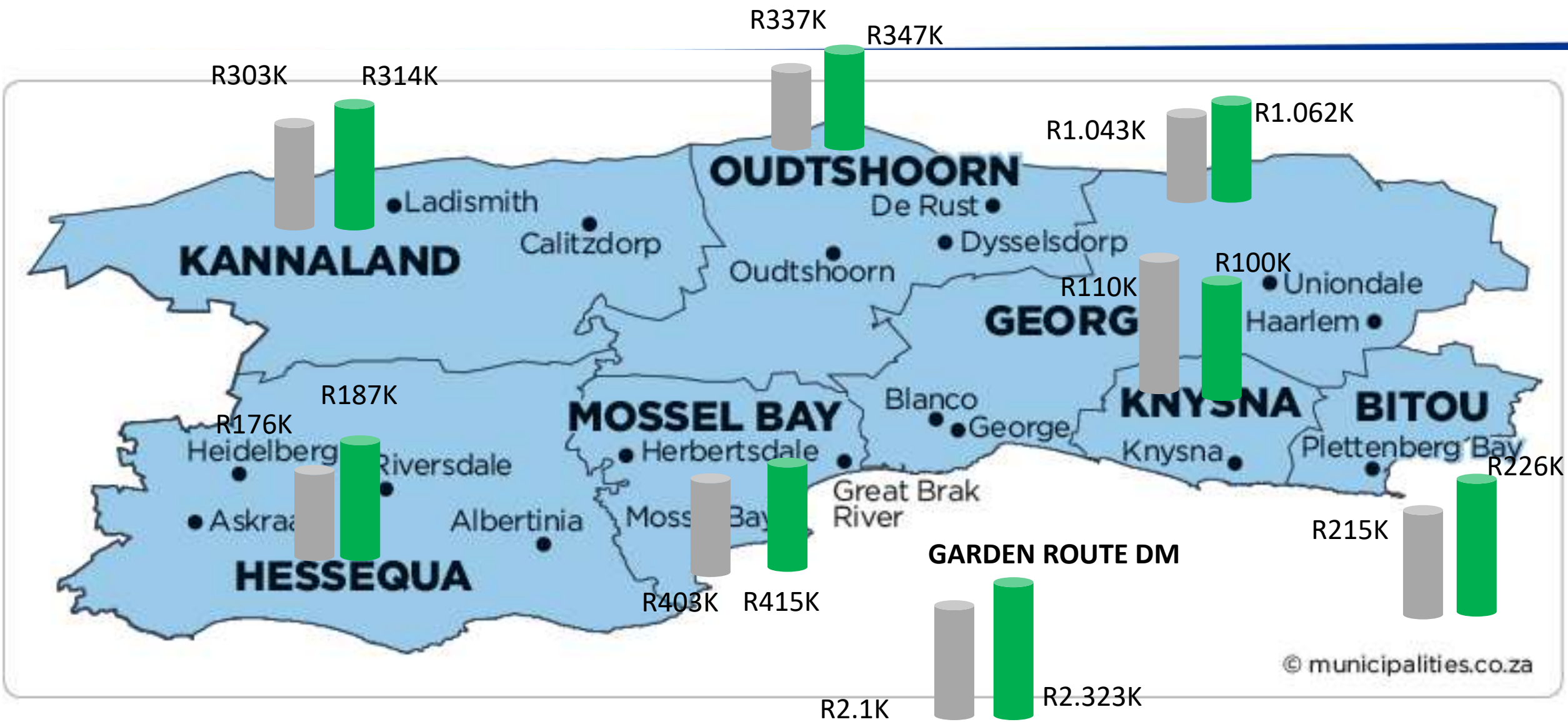
**Medium-term**

**Long-term**

## 6. ESTIMATED BUDGET & PROGRAMMES:



2020/2021(R4.782K) & 2021/22(R5.115K) ESTIMATED BUDGET FOR GARDEN ROUTE



# Proposed WCG Interventions in the next 100 days:

- *Which initiatives will be activated in the next hundred days and how will they link with initiatives in 2021/22 and beyond?*

Intervention	Implications for next 100 days
Safety Ambassador Programme	The safety ambassador programme is a Ministerial project whereby young people are placed on the EPWP programme. This provides them with an opportunity to gain valuable work experience whilst earning an income at the same time. 1000 site roll-out 500 Metro 100 per District & local level. It has a data led approach. 6 month programme in line with the 100 day Covid-19 response. The main focus is on Violence prevention, promoting safety; Patrolling;
Placement of 1000 EPWP youth	The intention is to recruit an additional 1000 Chrysalis Youth placed at various institutions as well as other public spaces in order to improve safety.
Chrysalis Academy: Youth development training focusing on trauma to become resilient to crime and violence	The Chrysalis Academy will provide the safety ambassadors with training on how to deal with trauma at their placement institutions as well as how to deal with their own trauma experienced in their daily lives

# Proposed WCG Links to medium-term interventions with budgets:

## Key Intervention:

- Safety Ambassador Programme
- Youth training and job placement
- Creating EPWP work opportunities for youth
- Area Based Teams
- Accreditation, training and funding of Neighbourhood Watch structures





# Proposed WCG Links to medium-term interventions with budgets:

## Key Intervention:

- Court Watching Briefs Programme



- Western Cape Police Ombudsman



- Driving the amendments to the Western Cape Liquor Act and perform its oversight function



**WESTERN CAPE**  
LIQUOR AUTHORITY

- Community Police Forums (CPF's)



# How will the interventions be aligned via the JDMA with the Municipalities?

Project description	Municipality/District
<p>Safety Implementation Plan (CSFs, District Coordination, monitoring of District Safety Plans). The district and metro safety plans will be the coordinating vehicle of co-planning and co-budgeting process.</p>	<p>Garden Route District</p>



---

Thank you