

FREE



NEWS

Edition 33 - Quarterly Newsletter
July - December 2019

Garden Route is 'fire season' ready

Drought, heat waves, freak weather and out of control wildfires, are a common phenomenon in the Garden Route and the Southern Hemisphere this time of the year. Thus, in an attempt to gear-up for the upcoming fire season, the Garden Route District Municipality's (GRDM's) Fire & Rescue Services, officially launched the opening of the 2019/20 Fire Season, on 5 December 2019 in George.

Fire Chiefs and Firefighters from across the district, representatives from the Western Cape Provincial Government Fire Services; South Cape Fire Protection Association; Eskom; Cape Nature; SANParks and Metro Emergency Medical Services (EMS) attended the event.

The purpose of the event was to officially acknowledge that the fire season has arrived and for all stakeholders in the Garden Route District to get together, gear-up and enforce an integrated operational approach in fighting fires in the district. Furthermore, to encourage and welcome fellow stakeholders' contribution and support in fire management, and lastly to demonstrate to the public that there is continuous work, collaboration and also capacity building to keep them safe, protect them from devastating fires and to confirm their readiness for any emergency.

As part of the "Fire Season Preparedness", the Fire & Rescue Services of GRDM appointed 20 temporary firemen and women, in order to have sufficient capacity for the hot summer season and increasing fire challenges that lies ahead. New fire equipment to the value of R6 million, including drones, two 6000lt Bush Tanker trucks and 1 Command vehicle, have been procured to enhance service delivery.

According to the GRDM Fire Chief, Mr Freddy Thaver, the drones will assist them in detecting hotspots that were not easily visible in the past. "Drones these days are becoming indispensable; it allows us to view fires, without having choppers in the air. With these drones we will be able to spot the hidden effects of fires, including fires that are burning underground," said Chief Thaver.

In addition to their readiness programme, GRDM Station Officer, Mr Deon Stoffels, also confirmed that except for the normal day-to-day firefighting activities, firefighters will also assist by clearing alien vegetation in the district; conducting public fire safety awareness; increase close monitoring of "alert systems" and "detection systems" and perform vehicle patrolling during extremely hot days, especially in areas of danger.



The temporary firefighters with Mr Clive Africa, GRDM Executive Manager: Community Services (middle row, 4th left), Cllr Khayaletu Lose, Portfolio Chairperson of Community Services (seated left) and Mr Monde Stratu, GRDM Municipal Manager (seated right) during the launch.



The GRDM Community Services Portfolio Chairperson, Councillor Khayaletu Lose (right), handed the truck's keys to the GRDM Fire Chief, Mr Freddy Thaver (left).



The 20 temporary firefighters which the Garden Route District Municipality (GRDM) Fire & Rescue Services appointed for the season.

2

Garden Route men show up in their numbers at 1st Men's Parliament Assembly in George

4

A 'first' Gender-Based Violence and Femicide Summit for the Garden Route District

6

A keen focus on policing needs and priorities at Garden Route Safety Summit

6

Leave no one behind through Gender Transformation

7

GRDM EHPs educate Early Childhood Development representatives regarding requirements of their facilities

11

GRDM Roads & Transport Planning - A leader in new machinery and women empowerment

Please note that Garden Route District Municipality's operating hours are as follows:
Mondays to Thursdays, 07:30 - 16:30 | Fridays, 07:30 - 13:30.

Foreword

by the Executive Mayor of Garden Route District Municipality
Cllr Memory Booysen



A warm welcome to our district

Odds are, the moment you enter the iconic Garden Route District, your soul will awaken with a jolt! We offer the perfect balance of nature and metropolis, outdoor adventure and shopping mall delight – our region is a gem, a springboard to launch visitors into an adventure of excellence across the entire region. You will find that there is never enough time to see and experience all that an area has to offer – so you have to come back again to continue your journey.

On a serious note, during your time with us we encourage you to exercise caution and to be tolerant while travelling on the road. Please obey the speed limits, the road rules, do not text or call while driving, do not drink and drive, and always wear a seatbelt. An important number to dial in case of an emergency is 044 805 5071 or 10177.

See you on the Garden Route!

STOP

**GENDER-BASED VIOLENCE
+ DOMESTIC ABUSE**

remember, silence allows violence.
SPEAK OUT - HELP THOSE WHO EXPERIENCE VIOLENCE

USEFUL NUMBERS TO KEEP	
SAPS Emergency Services	10111
Childline South Africa	0800 055 555
GBV Command Centre	0800 428 428
Legal Aid	0800 110 110
Commission for Gender Equality	0800 007 709
South African Human Rights Commission	011 877 3600
Domestic Violence Helpline	0800 150 150
AIDS Helpline	0800 012 322

Garden Route men how up in their numbers at 1st Men’s Parliament Assembly in George

On 5 December 2019, more than 300 men from communities and organisations in the Garden Route filled the Conville Community Hall in George to take part in the discussions of the first Men’s Parliament in the district.

The Men’s Parliament was launched and presented by the Deputy Minister of Social Development, Honorable Hendrieta Ipeleng Bogopane-Zulu, in collaboration with the South African National AIDS Council, Takiwane Riime and Garden Route District Municipality (GRDM). The purpose of the Assembly was to discuss approaches to behavioural change programmes of the Department of Social Development that seek to promote positive outcomes that are critical to change the course of gender-based violence faced by all South Africans.

During her keynote address, Ms Bogopane-Zulu praised the GRDM Executive Mayor, Cllr Memory Booysen, and Speaker, Cllr Barend Groenewald, as well as the local municipalities in the district for their support to implement the programme. She said: “This is long road, but if we will work together the road will get shorter. We cannot achieve anything if we do not have your support”. Ms Bogopane-Zulu further referred to the recent tragic deaths of women in the district as a result of gender-based violence, specifically in the Mossel Bay area and said: “It is time that men take full responsibility and accountability, not only for their individual actions, but also for their collective actions”. She added: “Whenever these perpetrators go to court, only the faces of women are visible outside the courts”. She furthermore said: “I want to see men with posters in front of these courts, not women. She encouraged men to stand firm and say ‘no, this one must not be allowed bail’”.



Deputy-Minister of DSD, Honorable Hendrietta Bogopane-Zulu during her keynote address encouraged all attendees to use their voices to help Government to implement programmes that will assist men to improve their circumstances and behaviour, to make this country a better country for all.

...continued - 1st Men's Parliament Assembly in George

Resolutions taken at the event:

Motions with Notice

1. Motions on Definition of a man

A man is not simply defined by his physical make-up, A man is a man through his action(s) that reflect good morals, accountability and the affection he brings to his house and community. A man is provider and a protector, nurtured by his character.

2. Motions on health Wellness and socio-economic hardships

We move for the adoption that men need to avail themselves to seek health advice timeously in order to detect and help prevent illnesses. Men need to undergo self-introspection and seek psychosocial services in order to effect social behavioural change practices. Men need to undergo HIV, TB, Prostate Cancer and heart-related health check-ups and take a greater responsibility in looking after their health. Men need to work in conjunction with the government to examine the nature and structural drivers of unemployment for middle-aged men and develop a framework that will remedy unemployment.

3. Motions on gender-based Violence

We move for the adoption to work towards eradicating and preventing new cases of GBV, femicide, rape and abuse. We as Men of Garden Route bind and commit ourselves to say "No women and Child" should suffer or experience any form of violence in our district, we say "Not in Our Name".

4. Motions on District Men's Parliament

We move for the adoption to work towards strengthening the implementation of Takuwani Riime and looking at avenues to strengthen the relationship between the Garden Route District Men's sector, District Municipality, local municipalities and the Department of Social Development. As men of the Garden Route District, we need to mobilize more men in communities, mobilize the business and capacitate existing men's sector structure. We need to move towards institutionalizing our movement to be absorbed by our district and local municipality through finding synergies and other methods of cooperation. District Men's Parliaments are to have quarterly sitting to monitor and evaluate implementation efforts, and to aid implementations of Boys Assemblies.



More than 300 men from various communities and organisations within the Garden Route district filled the seats at the Conville Community Hall in George to take part in the discussions of the Men's Parliament.



Executive Mayor of GRDM, Cllr Memory Booyesen (2nd right), together with Speaker of GRDM, Cllr Barend Groenewald and Municipal Manager of GRDM, Mr Monde Stratu, welcomed the Deputy-Minister of DSD, Honorable Hendrietta Bogopane-Zulu (middle) and Professor Archbishop Mbulelo Dyasi, Secretary of the Men's Sector, SANAC (right) to the Garden Route district, before the commencement of the 1st Men's Parliament assembly.



Left: Portfolio Councillor for Roads and Public Transport Services at GRDM, Cllr Rowan Spies, at the event, emphasised: "We as men have to find a way to deal with our egos and anger, in order to gain self-respect. Change only happens in the practice of discipline and forgiveness". He added: "We are servants at various levels of society and we must all translate it into what we do on a daily basis. We have to deal with our egos and forgiveness," he added.



The assembly was successfully chaired by the Speaker Barend Groenewald, who concluded the event with the following words: "Let us act to correct, educate and let the perpetrators face the consequences of their own shameful and deliberate actions".

A ‘first’ Gender-Based Violence and Femicide Summit for the Garden Route District

Garden Route District Municipality in collaboration with the South African Police Service and the Western Cape Department of Community Safety, held a Gender-Based Violence and Femicide Summit on 25-26 November 2019 at the Conville Community Centre in George.

The programme on day one (1) of the summit focused on organisations who deal directly with communities who face gender-based violence, femicide and other social ills. Day two’s highlight was when all those present were divided into groups who developed dozens of of priority actions to curb gender-based violence and femicide. Almost all actions require a collaborative approach to bring a positive change to society.



On day two (2) of the Summit, various work groups developed priority actions to curb gender-based violence and femicide.



Leadership of Garden Route District Municipality (GRDM) and Advocate Gideon Landman (3rd from left) from the Office of the Public Protector, attended the Summit. Pictured (fltr) are: Cllr Joslyn Johnson (GRDM Portfolio Chairperson: Property Management and Development), Cllr Erica Meyer (GRDM Portfolio Chairperson: Strategic Services), Advocate Gideon Landman, Cllr Barend Groenewald (GRDM Speaker), Cllr Rosina Ruiters (GRDM Deputy Executive Mayor) and Mr Monde Stratu (GRDM Municipal Manager).



Knysna Community Police Forum’s Chairperson, Cheryl Britz, presents one of the action plans that seeks to create a positive, and healthy and safe community.

Thuthuzela Care Centre



Ms Angelique Vezasie, the site coordinator at the Thuthuzela Care Centre at the George Provincial Hospital, presented all their services, but also the challenges they face on a daily basis.

Thuthuzela Care Centre (TCC), whose motto reads ‘Turning Victims into Survivors’ explained their role in society. While they are led by the National Prosecuting Authority’s Sexual Offences and Community Affairs Unit, in partnership with various departments, civil society and donors, they focus primarily on prevention, response and support for rape victims.

The Centre also introduced ‘**Stop Facilities**’ as a critical part of South Africa’s anti-rape strategy, which aims to reduce secondary victimization, improve conviction rates and improve the cycle time for the finalisation of cases.

The TCC for the Garden Route, which is open 24 hours a day, is based at George Hospital - one of 55 in the Western Cape.

Contact the TCC on 044 802 4429 for the following services:
- Medical Examinations, counselling, statement taking and investigations.

Phambili Women’s Shelter is a Non-Profit Organisation that supports and strengthen women to be able to break free from physical, emotional and economic abuse to diminish the occurrence of domestic violence and femicide. Over a period of 1 year, stretching from April 2018 till March 2019, Phambili dealt with 188 new cases, submitted 1401 protection order applications, provided 233 counselling and therapeutic services. They also rolled out 172 community outreach programmes over the 12 months.

The NPO provides the following services:

- Therapeutic programmes for women and children to restore their self-esteem, empower, educate and reintegrate them into the community after they were abused;
- Secure accommodation for victims for up to 3 months;
- Provide accredited skills training for those trapped in an environment where they might be dependent on the very same person who abuses them;
- Professional counselling and information sharing regarding domestic violence and abuse;
- Life skills training to foster independence;
- Child-care development programme to stimulate children’s mental capacity and educational abilities;
- After care programme to ensure that residents are involved in an integrated system of care which guides and tracks residents over an extended period of time after they’ve left the Phambili Shelter.

Contact Phambili Women’s Shelter on 044 875 1551 or e-mail phambilirefuge@cadscs.co.za if you are a victim of abuse or know of someone who is experiencing such violence.

Phambili Women’s Shelter



Ms Hester Greef, Director at Phambili Women’s Shelter, said drug and alcohol abuse, unemployment and funding opportunities are still challenges that the Shelter faces on a daily basis.

A keen focus on policing needs and priorities at Garden Route Safety Summit

The Western Cape Department of Community Safety, in collaboration with the South African Police Service and the Garden Route District Municipality (GRDM) recently hosted a Garden Route Safety Summit at the Civic Centre in George. The purpose of the Summit was for Government, in collaboration with various stakeholders and community representatives to determine the policing needs and priorities for the Garden Route District Municipal area. A Safety Plan review session also formed part of the two-day programme.

During his address Minister Fritz spoke about and made practical examples on how communities can contribute to reducing incidents of crime in general. With reference to the roles and responsibilities of Government, he stated: “We need to reflect on the crime situation in line with the plans of the Garden Route District Municipality, to understand the legal mandate of the district in terms of safety”. He also raised his concern about the issue of spatial transformation and stated that people are still living too far away from their workplaces.

Municipal Manager of GRDM, Mr Monde Stratu during his address said: “If we want to uplift our people from poverty, then we must all live in peace. We can give better opportunities to all, but we cannot do it if our people live in danger,” he added. Mr Stratu, when referring to the roles of councillors in terms of safety, he said: “As Government we have a responsibility towards the safety of our community. Our Integrated Development Plans should include crime prevention/community safety. He made reference to the Municipal Structures Act and said: “Councillors must know the needs and safety issues of their respective wards to incorporate it into municipal plans and strategies”. He concluded with the following words: “Legislation requires from all of us to work together”.

The programme, however, is still in its initial phase and a driver has already been identified to drive the programme from the Office of the Executive Mayor at GRDM.



GRDM Portfolio Chairperson for Strategic Services, Councillor Erica Ruiters, after the arrival of the MEC for Community Safety in the Western Cape, Minister Albert Fritz, said: “While having the Minister present, we know that after we leave here, we will have a clear plan on the table and a way forward to address crime in our region”.

Left: Minister Fritz during his address said: “We need safe and cohesive communities - people must feel safe and have hope, he added”. He also referred to the utilisation of neighbourhood watches - that they must be better utilised, not just for patrolling at night, but also to help address crimes at schools”.



Ms Theresha Hanekom, Deputy Director for Safety Planning at the Department of Community Safety, emphasised the importance of identifying a “driver” for the plan. She concluded with the words: “You cannot measure the effectiveness of a plan, if you do not have a designated driver to manage the plan”.

Adv Han-Marie Marshall, Director for Community Police Relations at the Department of Community Safety, in her presentation, emphasised the importance of having an early warning system to effectively respond to social unrest. She also said: “We must not underestimate the importance of ward committees for adequate community engagement during the unrest”.



Workplace Skills Plan in place



A proud moment for all role players when GRDM’s Workplace Skills Plan was finalised. Union members, Corporate Services, Human Resource Development and Councillors were present to witness the moment.

The Skills Development Act, Act 97 of 1998 as well as the Skills Development Levies Act, Act 9 of 1999 requires each municipality to produce a Workplace Skills Plan (WSP) and Annual Training Report (ATR), which must be annually submitted to the Local Government Sector Education and Training Authority (LGSETA), no later than 30 April. Failure to comply herewith will result in municipalities forfeiting the mandatory grant (MG) paid by the LGSETA.

The WSP is the key strategic planning document relating to workplace training, career pathing and employment equity for a municipality. A very important aspect of this document is the alignment with the key municipal objectives contained within the Integrated Development Plan (IDP), as well as the priority training areas identified in the Sector Skills Plan. In other words, the WSP outlines training planned by the municipality in a given financial year.

- At Garden Route District Municipality (GRDM), the Training Unit in the Human Resources Section is responsible for:
- Consolidation of the WSP;
 - Provide and present Stakeholders with the relevant guidelines for the compilation of the WSP;
 - Submission of the WSP and ATR to committees and departments;
 - Reports to management and committees; and
 - Submission of the signed WSP and ATR to LGSETA by no later than 30 April annually.

During the past Quarterly Training Committee Meeting, officials in the Training & Development Section, Mr Reginald Salmons, Ms Angeline Naidoo and Ms Angela-Ziwa Coetzee were awarded with a certificate of appreciation for once again complying with legislation.

The Chairperson of the Training Committee, Cllr Stephen deVries commended them for their commitment, diligence and hard work in compiling the document.

Employees donate to NPO

Garden Route District Municipality (GRDM) joined the ‘Special Needs Children are Different, not Less’ campaign of Binah and Legacy Centre to pledge support for special needs awareness. The campaign coincided with National Disability Rights Awareness Month from 3 November to 3 December and the International Day of Persons with Disabilities. Funds were raised by buying and selling green lollipops at a profit. GRDM officials bought a total of 130 lollipops and managed to raise R1450.00 that will be utilised to empower the special needs community of George by means of information and training on special needs.

We would like to thank the officials of GRDM for their eagerness to make a contribution towards this worthy cause.

GRDM Employee Assistance Practitioner, Shandré Abrahams, said: “The funds raised will be used to remove barriers and to improve the quality of life of people with disabilities.” The initiators of the campaign are from

the non-profit organisation, Binah and the tutoring centre for special needs children, Legacy Centre. It is important for the public to understand that disability is the consequence of an impairment that may be physical, sensory, cognitive, mental, emotional, developmental, or a combination of these.



R1450 Donation: Shandré Abrahams, (GRDM Employee Wellness Officer) hands over the funds collected from employees to Marelize Piek (Centre Manager & Teacher).

Leave no one behind through Gender Transformation

The Commission for Gender Equality (CGE) presented a programme about Gender Mainstreaming (equality, empowerment and transformation) on 7 and 8 November to Garden Route District Municipality’s (GRDM) council and administration. The objectives of the programme were to provide support, to advise and capacitate GRDM about issues of gender transformation. The Commission is a Chapter 9 Constitutional Human Rights State Institution, which seeks to ensure a drive towards the successful implementation of the United Nations Sustainable Development Goal relating to Gender Equality (5th goal). South

Africa and all other participating states have to localise this goal by defining, implementing and monitoring strategies at a local level to achieve targets. Leonard Macakati, an Educator from the Commission for Gender Equality presented the Gender Mainstreaming Programme. During his presentation, he specifically emphasised the importance of Gender Forums within municipalities. He then debunked the myth that many believe Gender Forums should consist of only women. “Gender Forums should include people of all genders, disabled people, members of the LGBT community and youth,” he said.



Right: Attendees of the Gender Mainstreaming Programme of day one (1) were mostly represented by Council. Pictured are, (fltr): Cllr Luzuko Tyokolo, Mr Leonard Macakati, Cllr Isaya Stemela (Portfolio Chairperson: Corporate Services). Middle (fltr): Cllr Theresia Van Rensburg, Cllr Rosina Ruiters (Deputy Executive Mayor), Ms Trix Holtzhausen (Executive Manager: Corporate Services), Cllr Erica Meyer (Portfolio Chairperson: Strategic Services), Ms Shandré Abrahams (Employee Assistance Practitioner). Back row (fltr): Cllr Barend Groenewald (Speaker), Cllr Ryk Wildschut and Cllr Bernardus van Wyk. (Not pictured: Mr Mzukisi Cekiso (IDP Manager), Cllr Joslyn Johnson (Portfolio Chairperson: Property Management & Development) and Cllr Liza Stroebel.

What is ‘Gender Sensitivity’?

While some might not be sure of the meaning behind “gender sensitivity”, it’s explained as follows by the European Institute for Gender Equality: “Understanding and taking into account the societal and cultural factors involved in gender-based exclusion and discrimination in the most diverse spheres of public and private life.

Insensitive and unequal treatment of men, women and members of the Lesbian, Gay, Bisexual, Transgender and Intersex communities are still prevalent in some of the most diverse societies in the world. There is in actual fact unequal treatment of people according to their gender in every sector of society - government, health, construction, agriculture, sport, to name a few. Moreover, gender sensitivity seeks to ensure that people rely less on assumptions about outdated traditional views expected of both men and women. It furthermore often also seen in the way in which people make use of language. It is therefore important to also look at how people address gender - texts expressed in a biased manner should be phased out and replaced with gender-neutral texts.

One example of indicators that might simplify the meaning behind gender sensitivity in terms in a “service delivery” context, is noticeable by the following:

- Are male and female condoms available to both sexes, or do we see find male condoms to be more accessible compared to female condoms? Once something like this has been researched

and statistical evidence is available, then the issue can be confronted through implementing a gender-sensitivity campaign, awareness or session with those responsible for the distribution or even the disseminating of male and female condoms. To take this point further, the other day I listened to a talk on radio about women being “expected, only because of their biological sex”, to make use of contraceptives. The radio presenter then, moments later, posed an interesting question to listeners. She asked what men thought about the idea of taking contraceptives. Thereafter, calls came flooding in and men were up in arms, offended and completely opposed to the idea of making use of contraceptives. Is this view by many men a view seen as “fair”? Let’s put it into perspective - birth control pills have many side effects which include: intermenstrual spotting, nausea, breast tenderness, headaches, migraines, weight gain, mood changes, decreased libido, etc.

Now the question that must be asked is: “why should women carry the burden of experiencing all these side effects - and not men too?”

Is there sensitivity to women in the case above? Or will we take a step back and think about how we can become ‘gender sensitive’ and consider the struggles people from other biological sexes, gender identities and expressions have to go through in a “normal day”?



Roads and Human Resources employees prioritised their health when they went for various screen tests at the event.

Commemorating Breast Cancer Awareness Month in pink 'and green'

Officials from Garden Route District Municipality (GRDM) on Friday, 18 October 2019, showed their support towards Breast Cancer Awareness Month, by wearing a pink ribbon and/or a pink t-shirt on the day.

Breast cancer is known as one of the most common cancers among South African women and the initiative is commemorated annually during the month of October, to create awareness about the illness.

On their arrival at the office in the morning, each employee was welcomed with a breast cancer awareness pamphlet, a packet of sweet treats and the pink ribbon. Later the morning, Breast Cancer information sessions were conducted by the representatives from the Department of Health, where after staff members used the opportunity to either consult with the health

professionals or underwent clinical breast examinations and were taught how to do breast self examinations. This does not only apply to females, but also men. Although male breast cancer is rare, the Breast Health Foundation recorded that in South Africa, 1-3% of all breast cancers happen in men.

Signs of the illness may include: swelling of all or part of the breast, skin irritation or dimpling, breast pain, nipple pain or the nipple turning inward, redness, "scaliness" or thickening of the nipple or breast skin, a nipple discharge other than breast milk, and a lump in the underarm area.

GRDM Roads & Transport Planning - A leader in new machinery and women empowerment

Officials from the Garden Route District Roads and Transport Planning Department, on 6 September 2019, welcomed a brand new Chip Spreader to their yellow fleet, at a road construction site in Friemersheim near Mossel Bay.

The R4.9 million machine was officially handed over by Mr Gottfried Handler from Compaction & Industrial Equipment to the Executive Mayor of GRDM, Cllr Memory Booysen on 6 September 2019. Also witnessing the official handover were Executive Deputy Mayor, Councillor Rosina Ruiters, Portfolio Chairperson of Roads and Transport Planning, Cllr Rowan Spies, the Executive Manager of Roads and Transport Planning, Mr John Godfrey Daniels, and staff.

The main purpose of the machine is to ensure a good quality of road surface dressing work. These machines are designed to accurately apply a controlled amount of stones to a road surface during a road sealing or resealing process. When officially handing over the machine, Mr Handler said: "We have many machines of this kind operating in South Africa, but this is the first for the Western Cape". Mr Handler further explained the benefits of the machine, that it covers a wide area of three meters and can extend to cover a road width of six meters. "The spreading mechanism is fully computerised; therefore any spreading amount can be registered on the computer," he added.

At the same occasion, Mr Daniels also announced the appointment of Ms Simile Mqota as Deputy Manager for Roads and he emphasised that Ms Mqota is the first African female in the Garden Route district to be appointed in a position of this nature. Mr Anton Steenkamp previously filled the position, but retired earlier this year. Mr Steenkamp will now mentor Ms Mqota for 18 months to ensure a smooth handover of all duties related to the post.

During his address at the ceremony, Cllr Rowan Spies praised the Roads and Transport Planning Department for the developments and progress of the department over the past year. He said: "It is heart-warming to see how much change is coming to the Garden Route, especially with regard to the diversity and expertise of the team. Cllr Spies added: "This Chip Spreader is an impressive machine, but the Roads and Transport Planning team, is more impressive". Cllr Spies also shared a word of gratitude to Mayor Booysen and said: "Thank you for allowing the Municipal Manager and officials to take forward a vision of what Garden Route aims to be and can be".

In his address to all stakeholders present, Mayor Booysen highlighted: "This is once again a moment to be proud of, as we continue to be a leader in experiencing new things. We have to use this machine to the benefit of the economy of the Garden Route," he added. In his congratulatory remarks to Ms Mqota, Mayor Booysen further said: "This event is also a confirmation that we are a leader in empowering our staff - more specifically our women". Mayor Booysen further requested all male employees at the site to support Ms Mqota in her new position. He furthermore shared a word of appreciation with Mr Anton Steenkamp for his 24 years of dedicated service to the organisation. He also thanked him for his willingness to mentor Ms Mqota and to share his valued skills that will only benefit the road users and economy of the region.



The face of the new R4.9 million Chip Spreader at the Friemersheim road construction site.

Right: The delegation with Ms Simile Mqota, soon after Mayor Booysen announced her appointment as Deputy Mayor: Roads. FLTR are: Mr Anton Steenkamp, former Deputy Manager: Roads, Cllr Memory Booysen, Executive Mayor, Mr Gottfried Handler (Compaction & Industrial Equipment), Mr John Godfrey Daniels, Executive Manager, Ms Simile Mqota, Deputy Manager: Roads Construction, Cllr Rowan Spies, Portfolio Chairperson: Roads and Transport Planning, Mr Gerald Sinkfontein, Deputy Manager: Mechanical Services and Mr Patrick Xalisa, Specialist Technical Advisor.



Left: Mayor Booysen (right) acknowledging Mr Anton Steenkamp (left) for his 24 years of service to the Roads and Transport Planning Department and thanked him for his willingness to mentor the newly appointed Deputy Manager: Roads. Deputy Mayor, Cllr Rosina Ruiters (middle), sharing the moment with them.



Annual Garden Route Environmental Forum (GREF) hosted in George

Officials and stakeholders who attended the Annual Garden Route Environmental Forum.

The annual Garden Route Environmental Forum's (GREF) key stakeholder event took place in George on 11 December 2019 under the theme: "Reflecting on regional environmental initiatives and planning ahead for 2020". Mandated by the Garden Route District Municipality (GRDM), the GREF is the premier environmental platform in the Garden Route during which stakeholders collaborate about topics for conservation, environmental adaption and community interaction.

At the Forum, GRDM Executive Mayor, Cllr Memory Booysen officially welcomed stakeholders and guest from around the Western Cape and reminded them of the four major challenges the district faced, namely, "Invasive alien plants, water scarcity, electrical shortages, and unemployment". Cllr Booysen highlighted the importance to link 'Invasive Alien Plants Eradication to Renewable Energy and Water Security, in an essence to address unemployment in the Garden Route District.

Western Cape Government (WCG) Provincial Minister of Local Government, Environmental Affairs and Development Planning, Mr Anton Bredell, presented the keynote address and stated that the Garden Route is the crown jewel of the Western Cape, and that stakeholders need to understand the science of planning for the future. Mr Bredell announced that the Western Cape faced 17 000 wildfires during 2017, including the devastating Knysna and Plettenberg Bay fires the same year. He continued by saying that the current drought situation causes havoc and a major concern for our future sustainability, as it is predicted that by the year 2030, the demand for fresh water will exceed 40% of supply.

Mr Bredell acknowledged and brought it to the attention of Councillors that the correct decisions may not always be the popular ones or the ones communities or councillors would prefer.

In conclusion he emphasised that Government cannot address the environmental challenges on its own, "It is our responsibility to take action for our future generations - we have to take hands and be more proactive. As a collective we would have to work with landowners so that they can be held accountable for their legally mandated responsibilities."

Speakers from various specialised fields of environmental management, for example, Department of Environment, Forestry and Fisheries (DEFF), Biodiversity and Coastal Management, SANParks and Agriculture, to name just a few, followed.

Delegates eagerly participated in discussions to find lasting solutions for prevailing regional problems, and a myriad of new challenges were identified and discussed. Discussions also took place on what the agricultural production scenario will reflect in two decades from now, what are the vulnerabilities of our coastline given the slight rise in ocean levels, stronger storm surges and floods, as well as to look at the fire risk to ever-expanding communities and the rural/urban interface.

Editor's Note:

GRDM and partners established the overarching Garden Route Environmental Forum, with the aim to coordinate regional conservation efforts, to serve as a catalyst to drive climate adaption practices in the Southern Cape, and to establish a better-coordinated approach to environmental management in the district. The Garden Route Environmental Forum aims to play a leading role in taking on environmental challenges, and to develop partnerships, in order to ensure and encourage a cohesive approach to find sustainable solutions.



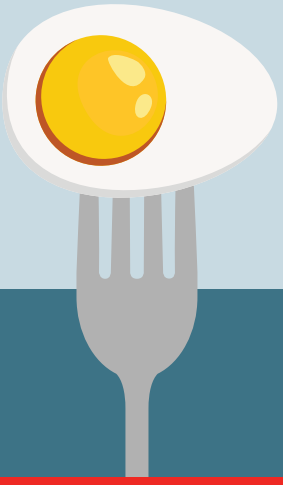
During his speech, Western Cape Provincial Minister of Local Government, Environmental Affairs and Development Planning, Mr Anton Bredell, captivated attendees with an insightful speech.



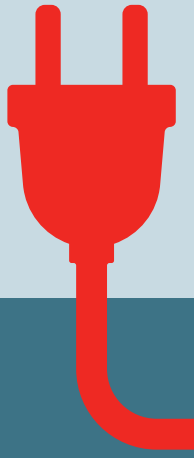
flTR: Mr Cobus Meiring – GREF Secretariat, Cllr Memory Booysen – GRDM Executive Mayor, Mr Gerhard Otto – GRDM Manager: Disaster Manager, Ms Nina Viljoen – GRDM Disaster Risk Reduction & Climate Change Adaptation Practitioner, Mr Clive Africa – GRDM Executive Manager: Community Services, Cllr Rosina Ruiters – GRDM Deputy Executive Mayor and Mr Anton Bredell - Western Cape Government Provincial Minister of Local Government, Environmental Affairs and Development Planning.

"It is our responsibility to take action for our future generations
- we have to take hands and be more proactive. As a collective
we would have to work with landowners so that they can be held
accountable for their legally mandated responsibilities."

- Mr Anton Bredell, Western Cape Government Minister of Local Government, Environmental Affairs and Development Planning



Eat Safe Food after a Power Outage



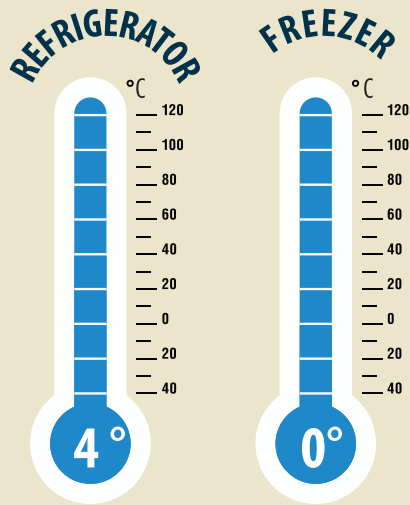
Refrigerated or frozen foods may not be safe to eat after the loss of power. Find out what you can do to keep food safe during a power outage, and when you need to throw away food that could make you sick.

Before

Keep appliance thermometers in your refrigerator and freezer.

The refrigerator should be at 4°C or below.

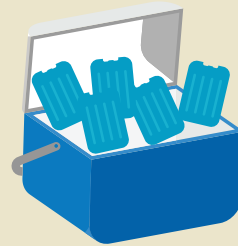
The freezer should be at 0°C or below.



Prepare for emergencies or natural disasters



Freeze containers of water and gel packs to help keep your food cold.



Buy dry ice or block ice to keep your food cold, if you think the power will be out for an extended period of time.



Have a cooler and frozen gel packs handy in case you have to remove your food from the refrigerator to keep it cold.

During

If the doors stay closed, food will stay safe for up to:

KEEP
Refrigerator
& Freezer Doors
CLOSED



48
Hours
in a
FULL
Freezer

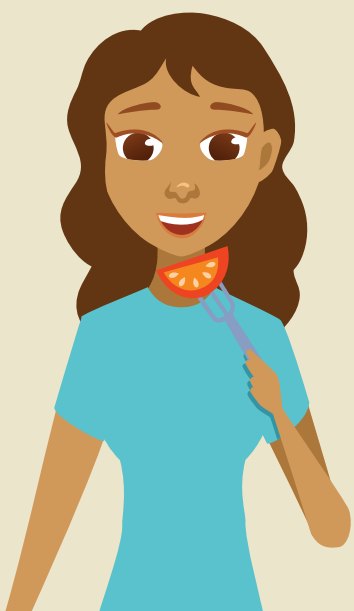


24
Hours
in a
HALF-FULL
Freezer

After

Never taste food to determine if it is safe to eat. When in doubt, throw it out.

- ⚡ **Throw out all refrigerated perishable food** (meat, fish, cut fruits and vegetables, eggs, milk, and leftovers) if it has an **unusual odor, color, or texture**.
- ⚡ If you have an appliance thermometer in your freezer, check to see if it is still at 4°C or below.
- ⚡ You can **safely refreeze or cook** thawed frozen food **that still contains ice crystals** or is at 4°C or below.



Local Content and Production (LC&P) hosted in George

The Western Cape Department of Economic Development and Tourism (DEDAT) in partnership with Provincial Treasury, the Department of Trade and Industry, as well as the Garden Route District Municipality (GRDM), recently, held a Local Content and Production (LC&P) workshop at the Outeniqua Research Farm in George.

The workshop formed a part of road show that was conducted in various districts within the Western Cape. Discussions focused on the issues that impact on the progression of LC&P, specifically in the Garden Route district. For this reason, local business representatives from various sectors and municipal officials from the local economic development and supply chain managements units attended the engagement to share their experiences and address issues in terms of local content and production.

During his welcoming speech and overview of the district, Municipal Manager of the GRDM, Mr Monde Stratu, spoke about the challenges of local content in a broader context and said: "When we talk about local content and production, it means we have some form of competition". He also referred to the economic instabilities internationally and narrowed it down to local challenges, including issues relating to the national electricity provider, unemployment, corruption within a municipal context. These challenges have become sophisticated because of globalisation etc. and we need to look at protecting our local industries. Mr Stratu also mentioned that when South Africa's economy opened its markets to international businesses, "it had to have some mechanism in place to protect our own economy, hence we talk about protection of the local industry and growing our own economy, creating sustainable jobs...". With these issues in mind and more specifically the issue of unemployment, he asked: "How successful were we in creating sustainable jobs in our district?" To which he further added: "Our sheer unemployment statistics are telling us that something is extremely wrong". Mr Stratu advised that perhaps the Government should not explore new regulations, instead we should perfect what we already have and analyse it to determine what we are doing wrong".

Various other vital issues were raised at the event, such as the issue of support and the development of SMMEs to be able to respond to tenders, as many of the tenders received from SMMEs are non-responsive. Manager in Finance

at GRDM, Mr Tebello Mpuru responded with his concerns about practical issues experienced by a supply chain management practitioners, as well as bidders and suggested that DTI, should make guidelines available to accompany regulations in order to reduce these administrative issues.

Ms Patricia September, from the Western Cape Department of Economic Development and Tourism (DEDAT) advised SMMEs to make use of the services offered by SEDA and all other resources available to develop themselves. Ms September also emphasised: "When the need for training arises SMME's must approach Government to fill those skills gaps within industries". She furthermore acknowledged that government institutions and industry do have best practices and advised that those best practices should be shared with one another.

All inputs gathered at the workshop will be discussed at a LC&P Summit and Exhibition for Government that is scheduled to take place this year. The purpose of the Summit and Exhibition will be to formulate a policy for the acceleration of local content and production of local commodities.

National and Provincial Government officials, as well as municipal officials from the district including Local Economic Development and Supply Chain Management officials, representatives from SMMEs, local corporate, including the SABS, business associations and industry representatives from the LC&P sectors attended the workshop.

What is Local Content and Production?

"Local Content" means that in terms of the manufacturing process the materials and labour in the manufacturing of the designated sector goods, are produced within the borders of South Africa. Therefore "locally" refers to "proudly made in South Africa" and does not begin to ring fence procurement from only people within the town or region but for all South Africans irrespective of location.



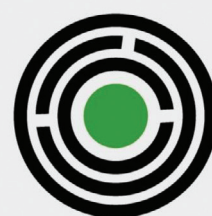
Municipal Manager from Garden Route District Municipality, welcomed all stakeholders present and contextualised the municipal environment in relation to local content and the local economy, during the event.



Above and below: Some of the Government stakeholders, municipal officials, as well as industry representatives attended the workshop.



GRDM Supply Chain Management officials who attended the workshop, were (flTR): Mr Tebello Mpuru, Manager: Finance, Ms Deidre Raubenheimer, Senior Accountant: Supply Chain Management, as well Supply Chain Management Officers, Ms Sandisa Gologolo and Ms Bukelwa Ndzinde, and Ms Melantha Botha, Supply Chain Management Administrator:



**CENTRAL SUPPLIER
DATABASE
FOR GOVERNMENT**

To pursue business opportunities with all three spheres of government, self-register on the Central Supplier Database.

VISIT:

<https://secure.csd.gov.za/>

GRDM EHPs educate ECD representatives regarding requirements of ECD facilities

Representatives from Early Childhood Development (ECD) Facilities, such as Crèche Principals and members of the George community, on 17 October, benefited from an ECD Programme that was presented by Environmental Health Practitioners (EHPs) from Garden Route District Municipality (GRDM) at the Conville Civic in George.

The initiative aimed to discuss the importance of daily practises that would be of benefit to a child and to ensure that the parents and ECD practitioners instil the correct values in the child's life while he or she is still young. Listening to every aspect shared at the event, it became clear that every activity during this 1000 day period has an effect on the mental and physical health and development of a child, e.g. how one talk the child and what one say to them, immunisation and also how the habits and activities of the parent or caretakers influence the child in the long run. Ms Fred also stressed her concern about the toxic habit of using drugs and alcohol during pregnancy and the undesired impact it will have on the baby. She therefore advised that love and affection is key to raise a healthy child and one example thereof is to play with the child. "This provides the opportunity for expressing love and care, communicating, building relationships and problem solving," she said.

Ms Chrystal Smith from Klein Karoo Resource Centre spoke about the importance of the registration of ECD facilities and that they are motivated to help ensure that all crèches in the Garden Route area become registered. For more information contact Ms Smith at: kkrcentr@mweb.co.za / tel: 044 272 7802.

GRDM EHP, Ms Jessica Erasmus, during her presentation, emphasized that health and hygiene habits are important for all ages, more so in settings where children who are in diapers and are very young are cared for. She stated: "Good health and hygiene practices, can help to

reduce the spread of germs and prevent children and caregivers from contracting diseases". She also explained that ECD facilities should be designed, built and equipped in manner that proper care can be given to the child and also to protect the child from any public health hazard, risk or public nuisance. "For every children 0 – 24 months they need 2m² each, children aged 2 – 7 years need 1,5m² each and the outside space per child, regardless of age is 2m²" and she added: "These requirements are to help allow the children to move around and have space to develop". She also shared the importance of a valid Certificate of Acceptability which is a legislative requirement for all premises who prepare and serve food. The certificate is issued by an EHP, to the effect that the premises comply with the Environmental Health regulations.

During her presentation with regard to food safety and personal hygiene, Ms Sive Mkuta, EHP at GRDM, invited two volunteers from the audience to each prepare a sandwich within five minutes. Before and during the preparation, she asked the audience to carefully look at how the sandwiches were prepared and subsequently asked them to identify any mistakes that were made during the preparation. The audience then responded that one of the ladies' hair was not properly covered, she did not wear gloves. It is important that all these factors are applied during the preparation of food specifically at ECD facilities. Other topics that were presented during the session include: fire safety at ECD facilities, town planning requirements as well as how to reduce waste, reuse waste and the recycling of waste.

A total of 150 representatives, including principals of crèches and caretakers, as well as members from the community were in attendance. Attendees found the topics very helpful in their journey to make a difference in the life of each child in their care.



During a demonstration, two volunteers from the audience were asked to prepare a sandwich within five minutes. The rest of the attendees then responded that one of the ladies' hair was not properly covered and that she did not wear gloves.



Above and below: Representatives from ECD facilities and members of the community, together with the presenters soon after the session held in Conville, George.

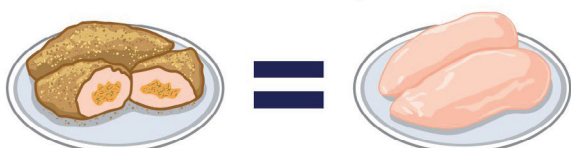


EHPs from GRDM, together with representatives from the Western Cape Department of Health, George Municipality, as well as Klein Karoo Resource Centre shared valuable information regarding ECDs at the event.



THE RAW STORY

Some frozen chicken entrees look like they're cooked - but they're not!



Handle raw frozen chicken — including frozen meals, entrees, and appetizers — the same way you handle raw fresh chicken to prevent foodborne illness:

- 1** Read the package carefully.
 This product contains RAW chicken.
- 2** Follow cooking instructions exactly as written.
- 3** Use a food thermometer to check doneness (73°C for chicken).
- 4** Clean and disinfect any surfaces and utensils that touched the raw product.
- 5** Wash your hands with soap and water after handling the raw product.

Ground-breaking Public-Private Partnership – A first of its kind for South Africa



The GRDM minds behind the Regional Landfill Facility – hard work paid off: (fLTR): Johan Gie (District Waste Management Officer, Johan Compion (Manager: Municipal Health and Environmental Management Services), Clive Africa (Executive Manager: Community Services) and Mr Morton Hubbe (Manager: District Waste Management).

Garden Route District Municipality’s (GRDM) Council, on 13 December 2019, approved a ten-year and eight-month contractual agreement for a Public Private Partnership (PPP) between GRDM and Eden Waste Management. Furthermore, the facility will include integrated disposal services to accommodate household and hazardous waste from four municipalities in the Garden Route - Bitou, Knysna, George and Mossel Bay.

According to Executive Mayor of GRDM, Cllr Memory Booysen: “This is a first of PPP of its kind for South Africa. We are the first district municipality out of 44 district municipalities in South Africa to champion such an initiative.”

“We are also planning a sod-turning event on 20 January 2020. Thereafter, construction of the facility will start in February 2020, with the first truckloads of domestic waste being disposed of by September 2020,” said Cllr Booysen.

COST AND SERVICES

The total cumulative cost to the district municipality over the contract period is projected at R790 million.

According to Mr Morton Hubbe, GRDM Manager: District Waste Management: “The Regional Waste Management Facility will have a life-span of approximately 30 years”. He also said: “Provision was made to accommodate waste from Hessequa, Kannaland and Oudtshoorn Municipalities - if the need arises.” Hessequa Municipality also recently indicated that they are interested to dispose of the domestic waste generated in Gouritzmond and Albertinia at the regional facility when in need of such a service.

The municipal services and support activities that will be provided by the Regional Waste Facility, will include the following:

- Safe disposal of general waste;
- a hazardous waste cell for the safe disposal of regional hazardous waste;
- bulk waste transport;
- chipping of green waste;
- crushing of builder’s rubble; and
- alternative waste treatment technologies, but only if the alternative waste treatment technologies can be incorporate on a no-additional cost basis.

The services of a roaming chipper, use for green waste, and crusher, used for builder’s rubble, will be made available to Mossel Bay, George and Knysna municipalities on a rotational basis. Bulk waste transport services will be available to George Municipality for the transport of domestic waste from Uniondale and George waste transfer stations to the Regional Facility.

Garden Route DM Communication Team:

1. Herman Pieters (Editor)
2. Marlene Nqumse
3. Marillia Veldkornet

Chief Local Government Communicators GRDM

Herman Pieters, communications@gardenroute.gov.za, 044 803 1419

Bitou Municipality

Andile Namntu, anamntu@plett.gov.za, 044 501 3000

Knysna Municipality

Christopher Bezuidenhoudt, cbezuidenhoudt@knysna.gov.za, 044 302 6381

George Municipality

Chantel Edwards-Klose, C-Edwards@george.org.za, 044 801 9160

Mossel Bay Municipality

Nickey Le Roux, nleroux@mosselbay.gov.za, 044 606 5000

Hessequa Municipality

Didi Budricks, didi@hessequa.gov.za, 028 713 8063

Oudtshoorn Municipality

Ntobeko Mangqengqwe, ntobeko@oudtmun.gov.za, 044 203 3189

Kannaland Municipality

Peter-George Rooi, Peter.george@kannaland.gov.za, 028 551 1023

Another ‘Unqualified Audit’ for Garden Route DM

Garden Route District Municipality received its second consecutive unqualified audit.

The Auditor-General (AG) attributed the Western Cape municipalities’ 2018/19 success to “effective leadership culture, the implementation of action plans, and established policies and procedures”.

“We managed to reduce all deviations by almost half when compared to 2017/18 financial year. This was one of the institution’s goals which was collectively achieved. I am proud of my administration and all the work they’ve put into retaining an unqualified audit status.

Council’s oversight and support have also been invaluable,” said Monde Stratu, GRDM Municipal Manager.

What do all these audit outcomes mean?

Clean Audit Outcome: The financial statements are free from material misstatements and there are no findings on reporting on performance objectives or non-compliance with legislation.

Unqualified Audit Opinion: The financial statements contain no material misstatements. Findings may have been made on either reporting on predetermined objectives or non-compliance with legislation, or both these aspects.

Qualified Audit Opinion: The financial statements contain material misstatements in specific amounts, or there is insufficient evidence for us to conclude that specific amounts included in the financial statements are not materially misstated.

Disclaimer of Opinion: On some occasions, an AQ is unable to complete an accurate audit report. This may occur for a variety of reasons, such as an absence of appropriate financial records. When this happens, the auditor issues a disclaimer of opinion, stating that an opinion of the firm’s financial status could not be determined.

AMBULANCE SERVICES 10177

Uniondale: 044 802 2500/084 388 3473

Oudtshoorn: 044 272 7752/083 754 1214

Ladismith: 028 551 2169/073 298 8105

Calitzdorp: 044 272 7752/083 754 1214

Knysna: 044 382 5613/083 459 9806

Mossel Bay: 044 691 2011/073 423 8258

Riversdale: 028 713 2313/082 441 7967

Swellendam: 028 514 1219

George: 044 802 2500/084 388 3473

ER24: 080 022 5599

SAPS: 10111

EMERGENCY NUMBERS

FIRE SERVICES 044 805 5071

Bitou/Plett: 044 501 3066

George: 044 801 6300

Hessequa: 028 713 8073

Kannaland: 028 551 1023

Knysna: 044 302 6348

Mossel Bay: 044 606 5031/2

Oudtshoorn: 044 272 2221

DISASTER MANAGEMENT

Eden District

Mr G Otto - Tel: 044 803 1537 | Cell: 083 630 2602

Overberg District

Mr R Geldenhuys

Tel: 028 425 1157 | **Cell:** 083 273 8234

Central Karoo District

Mr H Rust - Tel: 082 925 7953 | Cell: 023 449 1000

West Coast District Municipality

Ms S Visser - Tel: 022 433 2380 | Cell: 082 759 4055

Cape Winelands District Municipality

Ms S Minnies - Cell: 082 779 9823

Provincial Disaster Management Centre

Ms C Denier - Cell: 082 500 6770