



EDEN

DISTRICT MUNICIPALITY
UMASIPALA WESITHILI
DISTRKSMUNISIPALITEIT

PERFORMANCE MANAGEMENT

SECTION 72 REPORT

2015/2016

INDEX

Purpose of Report

KPI Monitoring -and Evaluation Graphs:

1. Municipality
2. Office of the Municipal Manager
3. Financial Services
4. Corporate Services
5. Roads Services
6. Community Services
7. Attached Annexure: **Performance Report on the Top Level SDBIP 2015/2016**
(July 2015 – Dec 2015)
8. Recommendation

MID-YEAR PERFORMANCE ASSESSMENT FOR EDEN DISTRICT MUNICIPALITY

Purpose of report

To submit to the Executive Mayor an assessment report on the Municipality's Performance covering the period 1 July 2015 to 31 December 2015.

1. Summary

In terms of Section 72 (1) of the Local Government: Municipal Finance Management Act, 2003 (Act 56 of 2003), the accounting officer of a municipality must, by 25 January of each financial year, assess the performance of the municipality during the first half of the financial year and submit a report on such an assessment to the Mayor of the municipality, the National Treasury and the relevant provincial treasury. The Mayor must in turn, comply with the provisions of Section 54, which includes submitting the report to Council by 31 January of each year.

2. Constitutional and Policy Implications

The process is currently driven by legislation. A reviewed policy is being compiled for approval.

3. Legal Implications

3.1 Section 72 (1), Local Government: Municipal Finance Management Act, 2003 (Act 55 of 2003), **referred to as the MFMA**

3.2 Local Government: Municipal Systems Act, 2000 (Act 32 of 2000) (Chapter 6 and sections 16 and 26 of Chapters 4 and 5, respectively), as read with the Local Government: Municipal Systems Amendment Act, 2003 (Act 44 of 2003)

4. Background

4.1 In terms of Section 72 (1) of the MFMA, the accounting officer of a Municipality must by 25 January of each year;

- (a) assess the performance of the municipality during the first half of the financial year, taking into account-
 - (i) the monthly statements referred to in section 71 for the first half of the financial year;
 - (ii) the municipality's service delivery performance during the first half of the financial year, and the service delivery targets and the performance indicators set in the service delivery and budget implementation plan;

- (iii) the past year's annual report, and progress on resolving problems identified in the annual report; and
- (iv) the performance of every municipal entity under the sole and shared control of the municipality, taking into account report in terms of section 88 from any such entity; and

(b) submit a report on such assessment to-

- (i) the Mayor of the municipality
- (ii) the National Treasury; and
- (iii) the relevant Provincial Treasury

4.2 Thereafter, the mayor must, in terms of Section 54 (1)-

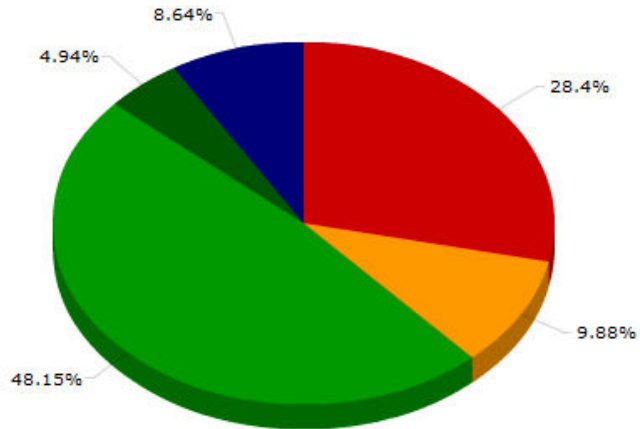
- (a) consider the report
- (b) check whether the municipality's approved budget is implemented in accordance with the service delivery and budget implementation plan;
- (c) consider and, if necessary, make any revisions to the service delivery and budget implementation plan, provided that the revisions to the service delivery targets and performance indicators in the plan may only be made with the approval of the council following approval of an adjustment budget;
- (d) issue any appropriate instructions to the accounting officer to ensure-
 - (i) that the budget is implemented in accordance with the service delivery and budget implementation plan; and
 - (ii) that spending of funds and revenue collection proceed in accordance with the budget;
- (e) identify any financial problems facing the municipality, including any emerging or impending financial problems; and
- (f) submit the report to the council by 31 January of each year

KPI Monitoring - and Evaluation Graphs

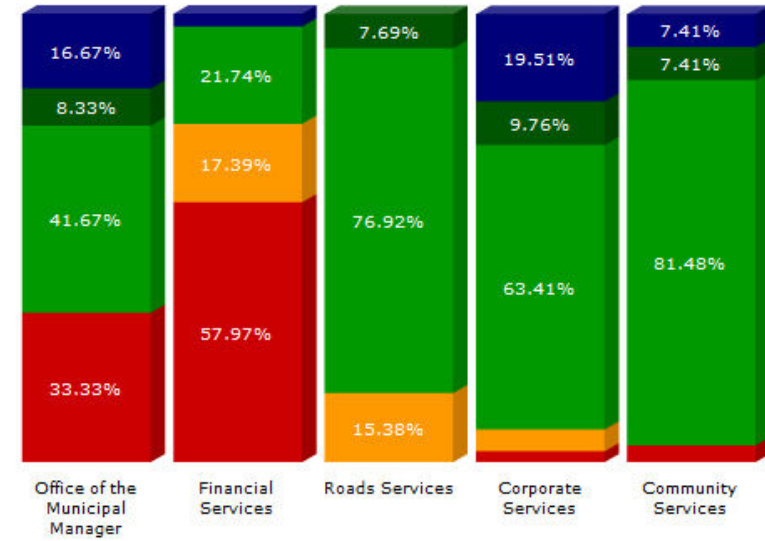
Entire Municipality

Report drawn on 19 January 2016 at 07:48
for the months of July 2015 to December 2015.

Eden District Municipality



Directorate

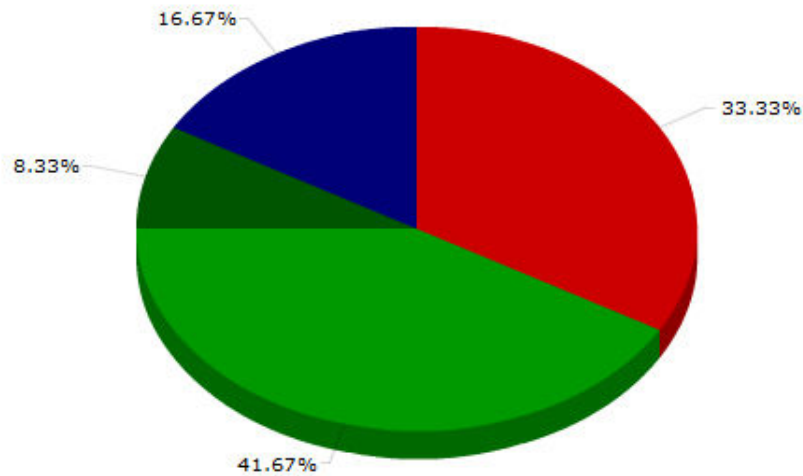


	Eden District Municipality	Directorate				
		Office of the Municipal Manager	Financial Services	Roads Services	Corporate Services	Community Services
KPI Not Met	46 (28.4%)	4 (33.3%)	40 (58%)	-	1 (2.4%)	1 (3.7%)
KPI Almost Met	16 (9.9%)	-	12 (17.4%)	2 (15.4%)	2 (4.9%)	-
KPI Met	78 (48.1%)	5 (41.7%)	15 (21.7%)	10 (76.9%)	26 (63.4%)	22 (81.5%)
KPI Well Met	8 (4.9%)	1 (8.3%)	-	1 (7.7%)	4 (9.8%)	2 (7.4%)
KPI Extremely Well Met	14 (8.6%)	2 (16.7%)	2 (2.9%)	-	8 (19.5%)	2 (7.4%)
Total:	162	12	69	13	41	27

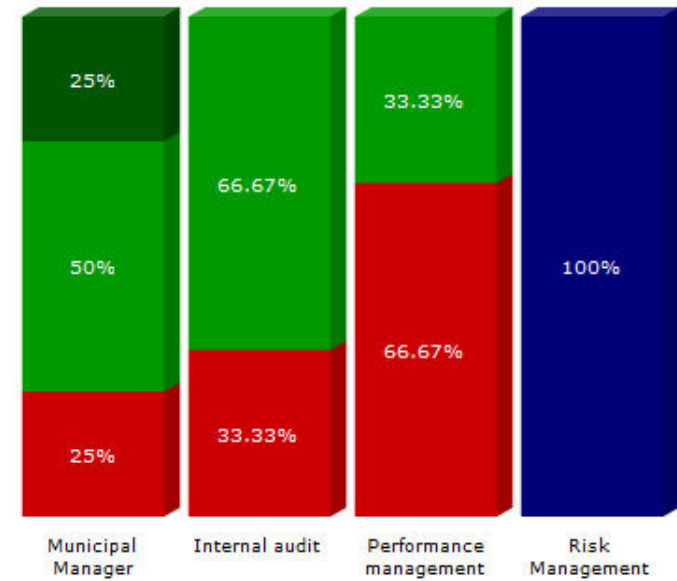
Office of the Municipal Manager

Report drawn on 19 January 2016 at 07:50
for the months of July 2015 to December 2015.

Office of the Municipal Manager



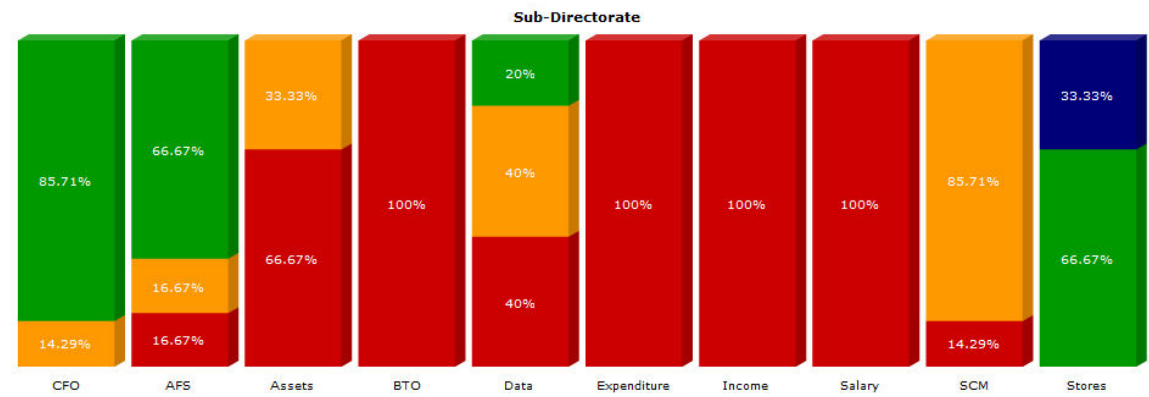
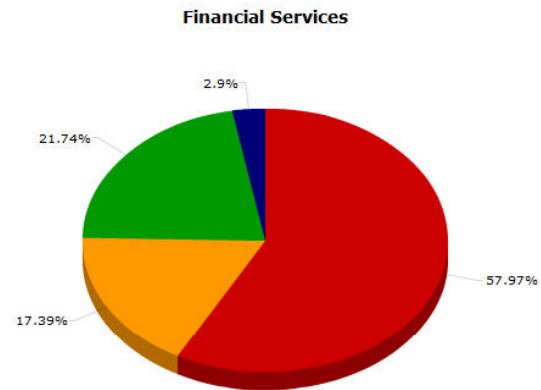
Sub-Directorate



	Office of the Municipal Manager	Sub-Directorate			
		Municipal Manager	Internal audit	Performance management	Risk Management
■ KPI Not Met	4 (33.3%)	1 (25%)	1 (33.3%)	2 (66.7%)	-
■ KPI Almost Met	-	-	-	-	-
■ KPI Met	5 (41.7%)	2 (50%)	2 (66.7%)	1 (33.3%)	-
■ KPI Well Met	1 (8.3%)	1 (25%)	-	-	-
■ KPI Extremely Well Met	2 (16.7%)	-	-	-	2 (100%)
Total:	12	4	3	3	2

Financial Services

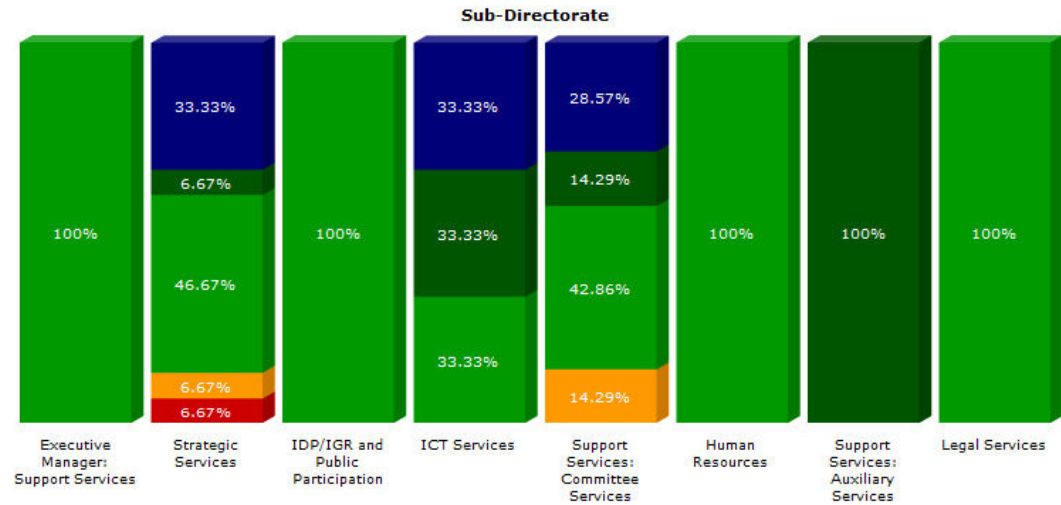
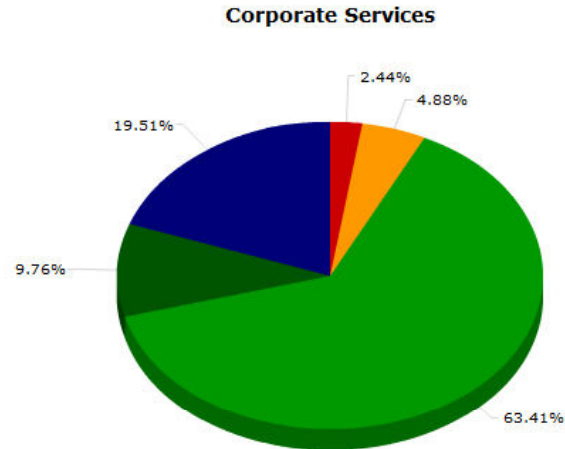
Report drawn on 19 January 2016 at 07:52
for the months of July 2015 to December 2015.



	Financial Services	Sub-Directorate									
		CFO	AFS	Assets	BTO	Data	Expenditure	Income	Salary	SCM	Stores
KPI Not Met	<u>40 (58%)</u>	-	<u>1 (16.7%)</u>	<u>4 (66.7%)</u>	<u>6 (100%)</u>	<u>2 (40%)</u>	<u>11 (100%)</u>	<u>6 (100%)</u>	<u>9 (100%)</u>	<u>1 (14.3%)</u>	-
KPI Almost Met	<u>12 (17.4%)</u>	<u>1 (14.3%)</u>	<u>1 (16.7%)</u>	<u>2 (33.3%)</u>	-	<u>2 (40%)</u>	-	-	-	<u>6 (85.7%)</u>	-
KPI Met	<u>15 (21.7%)</u>	<u>6 (85.7%)</u>	<u>4 (66.7%)</u>	-	-	<u>1 (20%)</u>	-	-	-	-	<u>4 (66.7%)</u>
KPI Well Met	-	-	-	-	-	-	-	-	-	-	-
KPI Extremely Well Met	<u>2 (2.9%)</u>	-	-	-	-	-	-	-	-	-	<u>2 (33.3%)</u>
Total:	69	7	6	6	6	5	11	6	9	7	6

Corporate Services

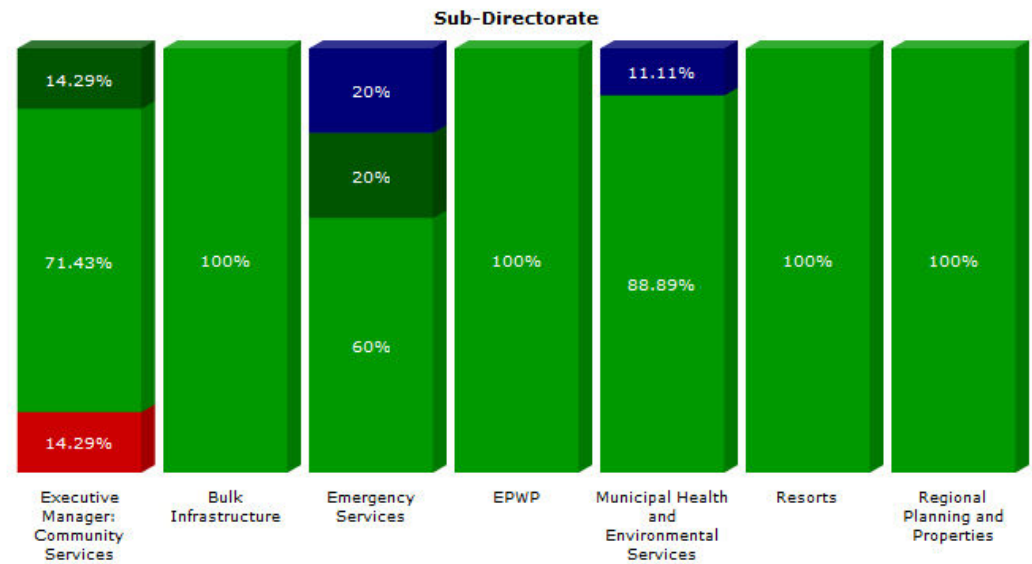
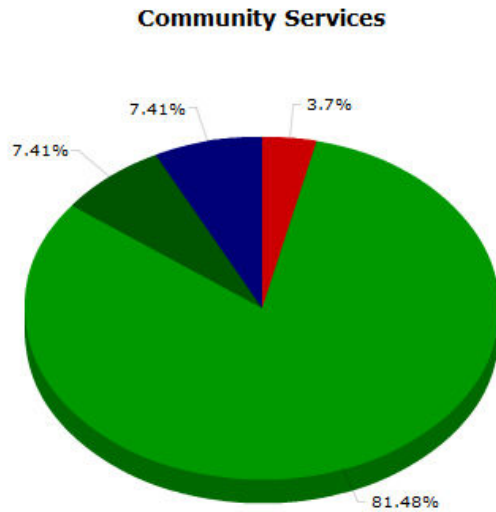
Report drawn on 19 January 2016 at 07:53
for the months of July 2015 to December 2015.



	Corporate Services	Sub-Directorate							
		Executive Manager: Support Services	Strategic Services	IDP/IGR and Public Participation	ICT Services	Support Services: Committee Services	Human Resources	Support Services: Auxiliary Services	Legal Services
■ KPI Not Met	1 (2.4%)	-	1 (6.7%)	-	-	-	-	-	-
■ KPI Almost Met	2 (4.9%)	-	1 (6.7%)	-	-	1 (14.3%)	-	-	-
■ KPI Met	26 (63.4%)	6 (100%)	7 (46.7%)	2 (100%)	1 (33.3%)	3 (42.9%)	3 (100%)	-	4 (100%)
■ KPI Well Met	4 (9.8%)	-	1 (6.7%)	-	1 (33.3%)	1 (14.3%)	-	1 (100%)	-
■ KPI Extremely Well Met	8 (19.5%)	-	5 (33.3%)	-	1 (33.3%)	2 (28.6%)	-	-	-
Total:	41	6	15	2	3	7	3	1	4

Community Services

Report drawn on 19 January 2016 at 07:55
for the months of July 2015 to December 2015.

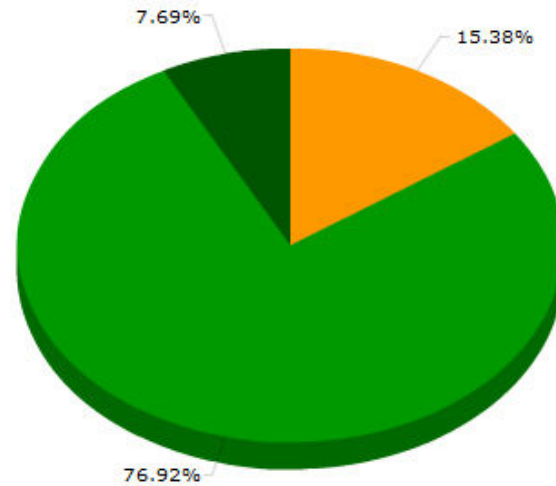


	Community Services	Sub-Directorate						
		Executive Manager: Community Services	Bulk Infrastructure	Emergency Services	EPWP	Municipal Health and Environmental Services	Resorts	Regional Planning and Properties
KPI Not Met	1 (3.7%)	1 (14.3%)	-	-	-	-	-	-
KPI Almost Met	-	-	-	-	-	-	-	-
KPI Met	22 (81.5%)	5 (71.4%)	1 (100%)	3 (60%)	3 (100%)	8 (88.9%)	1 (100%)	1 (100%)
KPI Well Met	2 (7.4%)	1 (14.3%)	-	1 (20%)	-	-	-	-
KPI Extremely Well Met	2 (7.4%)	-	-	1 (20%)	-	1 (11.1%)	-	-
Total:	27	7	1	5	3	9	1	1

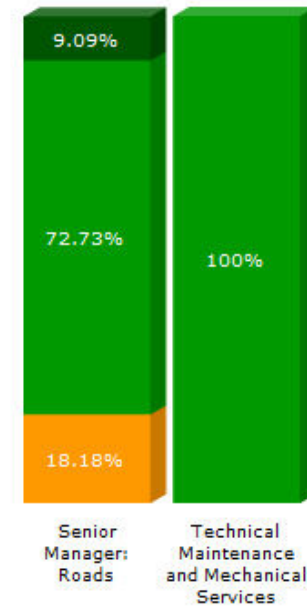
Roads Services

Report drawn on 19 January 2016 at 07:54
for the months of July 2015 to December 2015.

Roads Services



Sub-Directorate



	Roads Services	Sub-Directorate	
		Senior Manager: Roads	Technical Maintenance and Mechanical Services
■ KPI Not Met	-	-	-
■ KPI Almost Met	2 (15.4%)	2 (18.2%)	-
■ KPI Met	10 (76.9%)	8 (72.7%)	2 (100%)
■ KPI Well Met	1 (7.7%)	1 (9.1%)	-
■ KPI Extremely Well Met	-	-	-
Total:	13	11	2

7. Attached Annexure: **Performance Report on the Top Level SDBIP 2015/2016**

(July 2015 – Dec 2015)

8. Recommendations

The following recommendations are made with regards to the performance management of Eden District Municipality:

1. The Departmental SDBIP be revised
2. The Top Level SDBIP be revised
3. All adjustments to the SDBIP commence after the adjustment budget has been approved and submitted as follows;
 - Top Level SDBIP – The Executive Mayor for approval
 - Departmental SDBIP – The Municipal Manager for approval
4. That the content of this report be approved by the Executive Mayor and forwarded to the relevant Governmental Departments